

Discussion Paper No. 1135

ISSN (Print) 0473-453X

ISSN (Online) 2435-0982

WHAT IS CONSUMER CONFIDENCE?

Jean-Paul L'Huillier
Robert Waldmann
Donghoon Yoo

Revised December 2021

June 2021

The Institute of Social and Economic Research
Osaka University
6-1 Mihogaoka, Ibaraki, Osaka 567-0047, Japan

What Is Consumer Confidence?*

Jean-Paul L’Huillier, Robert Waldmann, Donghoon Yoo[†]

December 2, 2021

Abstract

This paper offers a structural interpretation of survey measures of consumer confidence. To this end, we consider a simple consumption model with noisy information about fundamentals and estimate a model-based measure of consumer confidence using national accounts. We show that the model-implied measure corresponds well to fluctuations in confidence survey data for the U.S. and a host of European countries. Our analysis provides an informational mechanism to conceptualize and interpret these widely used confidence indices.

Keywords: Aggregate spending, confidence indices, noisy information

JEL Classification Codes: E21, E32, E66

*This paper has previously circulated under the title “Confidence, Fundamentals, and Consumption”. We benefited from very useful feedback from Gene Ambrocio, Kenza Benhima, Nicholas Bloom, Jan Magnus, Yuta Takahashi, Daniele Terlizzese, and Takayuki Tsuruga. We also thank for seminar and conference participants at the Asian Econometric Society Meeting in Seoul, Hanyang University, Humboldt University of Berlin, ISER-Osaka University, Yonsei University, and Korean Economic Review International Conference for helpful suggestions. Yoo acknowledges financial support from the Joint Usage/Research Center at ISER, Osaka University and Grant-in-aid for Research Activity, Japan Society for the Promotion of Science (21H04397, 20K01546, 20H05631).

[†]Brandeis University, email: jplhuillier2010@gmail.com; University of Rome “Tor Vergata”, email: robert.waldmann@gmail.com; Institute of Social and Economic Research (ISER), Osaka University, email: donghoonyoo@gmail.com.

1 Introduction

Measuring how confident consumers are about the overall state of the economy, consumer confidence is widely discussed in the popular press and in economic commentaries.¹ While unambiguously reflecting prevailing economic and business conditions perceived by survey respondents, interpreting “consumer confidence” has been the subject of discussion in the academic literature. On the one hand, consumer confidence measures have an important prognostic and causal role in understanding the business cycle fluctuations. To the other extreme, there exists the view that expectations held by consumers are little more than uninformed guesses. Regardless of the role of consumer confidence in macroeconomics, we often observe a close relationship between aggregate trends in the measure of confidence with the corresponding trends in the aggregate quantities. It is then natural to ask if we can characterize the mechanism by which consumers’ attitudes influence aggregate fluctuations.

In this paper, we evaluate what consumer confidence represents from the lens of business cycle models. We argue that rationally processing and learning from economic information can provide a platform for researchers and practitioners to identify and understand measures of consumer confidence. Specifically, we provide an informational mechanism to conceptualize and interpret consumer confidence measurements using national accounts.²

In Section 2, we lay out a foundation to measure *model-based* consumer confidence. We assume that consumers cannot perfectly forecast the future and proceed to estimate confidence given a structural interpretation of the economy. Our simple learning model based on Blanchard, L’Huillier, and Lorenzoni (2013) and L’Huillier and Yoo (2017) captures the idea that waves of optimism and pessimism are related to the dynamics of spending (relative to productivity). There, agents’ perception of the future changes due to fundamentals and information *unrelated*

¹These survey-based indices include the Index of Consumer Sentiment (ICS), produced by the Survey Research Center of the University of Michigan, and the Consumer Confidence Index, issued by the Conference Board among others. Appendix A provides a more detailed description of these indices.

²Since its inception in 1953, the System of National Accounts constitutes, in principle, an internationally consistent and coherent measure of activity. Thus, a structural method based on national accounts could provide a measure for consumer confidence that is internationally consistent.

to present (or past) fundamentals.

In our attempt to estimate consumer confidence, we make two strong assumptions. First, agents' information structure is given by the combination of the permanent-transitory productivity decomposition and the signal on the permanent component. Second, a structural model describing agents' consumption behavior follows the permanent income logic. Productivity is determined exogenously by a combination of a permanent and a temporary shock. Consumers receive noisy signals about the permanent productivity of the economy. According to the permanent income hypothesis, consumers choose spending based on their expected future income. Thus, estimating the parameters of the model and making inferences is feasible by looking at productivity and consumption trends. We, as econometricians, are able to estimate consumers' beliefs about the future and underlying structural shocks.

Our set of assumptions and approach can reasonably achieve our goals for the following reasons. First, our simple model achieves identification. Second, the model fits the data well. Third, the information structure captures well the role of belief-driven fluctuations. Fourth, more complex models need a fixed rate to fit the data. (We elaborate on these points in Section 2.1.)

While incorporating noisy news in a standard model has recently been discussed,³ our focus is on extracting the evolution of agents' perception about the state of the economy. We isolate the contribution of noisy signals to current consumption, effectively capture the role of agents' additional information beyond the fundamental, which we call our *model-based consumer confidence index*.

Having estimated consumer confidence, we proceed to compare it with a survey-based confidence index in Section 3. We use U.S. national accounts data to obtain the model-based consumer confidence index and compare it with the Index of Consumer Sentiment (ICS). A key contribution of our paper is to show that model-based consumer confidence matches the ICS quite well, with a statistically significant ($< 1\%$) correlation of 0.52 between the two. Smoothing out high-frequency noise using a band-pass filter delivers a higher correlation with the ICS (0.79)

We also compare our model-based consumer confidence with the Consumer

³See, for example, Blanchard et al. (2013), Boz, Daude, and Durdu (2011), and Cao and L'Huillier (2018).

Confidence Index (CCI) in fourteen European countries in Section 4. Our results show that model-based measures are estimated to be highly correlated with the survey-based measure for nine out of fourteen countries in our sample (even if we do not use the survey measures as an input).

At the same time, there exists a great deal of heterogeneity such that for countries like Austria, Belgium, Germany, Finland, and Sweden, our measure fails to match the CCI. We show that, to some degree, this observed heterogeneity is driven by the survey measure not being able to track observed consumption contemporaneously.

Relation to the literature

The crucial ingredient of our model is an information structure where agents receive noisy information of permanent productivity of the economy, discussed in Boz, Daude, and Durdu (2011), Lorenzoni (2009), Blanchard, L’Huillier, and Lorenzoni (2013), Cao and L’Huillier (2018), and Rousakis (2013), among others. While sharing similar information structures, we attempt to solve a signal extraction problem sequentially, as in L’Huillier and Yoo (2017) and Yoo (2019), disentangling the effects of different signals on aggregate fluctuations.

Using consumer confidence to forecast aggregate quantities, Batchelor and Dua (1998) show that paying attention to the sharp fall in consumer confidence would have helped predict the 1991 recession. However, consumer confidence would have not been helpful in forecasting recessions in other years. Howrey (2001) shows that the U.S.’s ICS is a statistically significant predictor for forecasting the near-term probability of a recession when used independently or in conjunction with other indicators.⁴ In addition, Lahiri, Monokroussos, and Zhao (2015) consider a more realistic and general context to analyze the predictive power of consumer confidence by using monthly and real-time data along with a large number of explanatory variables and show that measures of consumer confidence provide a positive contribution in forecasting consumption expenditure. Barsky and Sims (2012) use structural estimation to assess the impact of consumer confidence in a model that features signal extraction.

⁴These indicators include the spread between long and short-term interest rates, the New York Stock Exchange composite price index, and the Conference Board index of leading indicators.

Our modeling approach originates in the contributions by Beaudry and Portier (2004, 2006). They were the first to point out that news shocks offer a useful interpretation of macroeconomic data. Schmitt-Grohé and Uribe (2012) also investigated the impact of news shocks in a structural model. More recently, Chahrour and Jurado (2018, 2021) have made important advances in the identification of this type of shocks.

Other parallel strands of the literature investigate the impact of swings in private sector confidence but use very different models. For example, Ilut and Schneider (2014) use ambiguity. Angeletos and La'O (2013) use shocks akin to sunspots that operate in unique equilibrium models. Angeletos, Collard, and Dellas (2018) use a tractable form of higher order belief dynamics. To the best of our knowledge, none of these strands of the literature has taken a similar focus on survey data as we do.

2 Confidence in a simple consumption model

We extract consumer confidence from a simple consumption model with the learning problem of a consumer who forms beliefs about the future path of productivity.

In this economy, consumption is the only endogenous variable and the behavior of consumption is described by a random walk:

$$c_t = \mathbb{E}_t[c_{t+1} | \mathcal{I}_t]$$

which can be derived from first principles. For details, see Blanchard et al. (2013).

There is no capital, and output is completely determined by the demand side where consumption is the only determinant of demand:

$$y_t = c_t$$

Simplifying the supply side, we assume that the role of labor input is to adjust to the current productivity level a_t and to produce output y_t :

$$y_t = a_t + n_t$$

Given that the output in the long-run returns to its natural level

$$\lim_{j \rightarrow \infty} \mathbb{E}_t[c_{t+j} - a_{t+j}] = 0$$

current spending c_t is defined by

$$c_t = \lim_{j \rightarrow \infty} \mathbb{E}_t[a_{t+j}] \tag{1}$$

such that Equation (1) suggests consumption depends on the consumers' long-run productivity expectation.

We consider a single, representative information set by Blanchard et al. (2013) where fundamentals are stochastic processes describing exogenous changes in productivity or income summarized by a_t . Productivity is characterized by the sum

of two components - a permanent component x_t and a transitory component z_t :

$$a_t = x_t + z_t$$

where two components are respectively defined by

$$\Delta x_t = \rho_x \Delta x_{t-1} + \epsilon_t$$

$$z_t = \rho_z z_{t-1} + \eta_t$$

The permanent component x_t follows a randomly changing trend due to a permanent shock ϵ_t , and the transitory component follows the stationary process with a transitory shock η_t . Two productivity shocks ϵ_t and η_t are assumed to be i.i.d. Gaussian with variances σ_ϵ^2 and σ_η^2 . The coefficients ρ_x and ρ_z are in $[0, 1)$.

We assume that the univariate process for a_t is a random walk:

$$\mathbb{E}[a_{t+1}|a_t, a_{t-1}, \dots] = a_t \tag{2}$$

Blanchard et al. (2013) show that this random walk representation is analytically convenient and is also broadly in line with actual productivity data. This implies that

$$\rho_x = \rho_z = \rho$$

Also, the variances need to satisfy the restrictions:

$$\sigma_u^2 = \frac{(1 - \rho)^2}{\rho_\epsilon^2} \tag{3}$$

and

$$\sigma_u^2 = \frac{\rho}{\sigma_\eta^2} \tag{4}$$

where σ_u is the standard deviation of Δa_t . Appendix F relaxes these parametric restrictions.

A key assumption regarding the productivity processes is while agents observe productivity a_t as a whole, they do not observe the components x_t and z_t separately. This informational assumption is important since agents choose their

current spending using their expectations about future productivity.⁵ Since the transitory productivity process $z_{t+\infty}$ dies out in the long-run, just observing the whole productivity process a_t is not sufficient to predict the future state of the economy. Thus, agents would need to update their expectations about the future productivity. We assume they do so using the Kalman filter.

Considering the idea that agents have more information than merely about productivity, agents observe a noisy signal s_t about permanent productivity:

$$s_t = x_t + \nu_t \tag{5}$$

where ν_t is an i.i.d Gaussian shock with mean zero and variance σ_ν^2 , and the shock ν_t is a noise shock because it affects agents' beliefs but is independent of fundamentals. This noisy signal denotes the additional informative signal that agents receive which is a straightforward interpretation of Equation (5). Ultimately, the presence of this noisy information helps the econometrician make inferences about the (unobserved) long-term productivity trend by looking at the behavior of consumption.

2.1 How valid is this approach?

Our model assumptions are reasonable and useful for the application at hand for the following reasons.

First, our simple model is identified, as a number of recent works have demonstrated (see Blanchard et al. 2013, L'Huillier and Yoo 2019, Cao and L'Huillier 2018, among others).

Second, this model fits the data well. Chahrour and Jurado (2018) show that their version of Blanchard et al. (2013) fits better than alternative specifications according to the Bayesian information criterion (BIC).⁶

Third, the information structure captures the role of belief-driven fluctuations. Combined with the forward-looking consumption decision, it generates empirically realistic co-movement patterns in response to a noise shock, as empirically evident by Chahrour and Jurado (2018).

⁵For the rest of the paper we use the terms *agents* and *consumers* interchangeably.

⁶See Table 4 and the subsequent discussion on pp. 1731-1732 of Chahrour and Jurado (2018).

Fourth, more complex models need a fixed rate to fit the data, as shown in Blanchard et al. (2013) and Cao and L’Huillier (2018). The general equilibrium effects of real interest rate changes on consumption are almost entirely neutralized in the class of medium-scale DSGE models that are most often used in quantitative macroeconomic work. See L’Huillier and Yoo (2019) for a detailed investigation of this. Thus, our main economic mechanism (the permanent income assumption) provides a good approximation to this richer class of models. Moreover, the estimation based only on the assumption of permanent income behavior using consumption and productivity data is less likely to be subject to misspecification than is the estimation of bigger models using more data.

Overall, our economic mechanism and information structure provide a good approximation of consumption behavior and effectively capture the role of belief-driven fluctuations, both of which are essential for our application to estimate consumer confidence.

2.2 Solving the model

Solving the model for consumption is a direct implementation of the Kalman filter to solve a signal extraction problem for the expectation about future productivity $a_{t+\infty}$. First, solving Equation (1), we get

$$c_t = \frac{1}{1 - \rho} (x_{t|t} - \rho x_{t-1|t}) \quad (6)$$

where $x_{t|t} \equiv \mathbb{E}[x_t | \mathcal{I}_t] \equiv \mathbb{E}_t[x_t]$ and $x_{t-1|t} \equiv \mathbb{E}[x_{t-1} | \mathcal{I}_t] \equiv \mathbb{E}_t[x_{t-1}]$ represent agents’ beliefs about current and lagged permanent productivity, respectively. Here, the agents’ information set at time t , \mathcal{I}_t , includes current productivity, a_t , a noisy signal, s_t , and lagged information, \mathcal{I}_t :

$$\mathcal{I}_t = (a_t, s_t, \mathcal{I}_{t-1})$$

where $\mathcal{I}_0 = (a_0, s_0)$.

Second, agents’ beliefs about the permanent state of the economy ($x_{t|t}$ and $x_{t-1|t}$) can be obtained by solving a signal extraction problem where an unobservable state vector \mathbf{x}_t is given by $\mathbf{x}_t = (x_t, x_{t-1}, z_t)'$, and an observable vector is

given by $\mathbf{s}_t = (a_t, s_t)'$:

$$\mathbf{x}_{t|t} = [I - \kappa \times C]A\mathbf{x}_{t-1|t-1} + \kappa \times \mathbf{s}_t \quad (7)$$

where $\mathbf{x}_{t|t} = (x_{t|t}, x_{t-1|t}, z_{t|t})'$ and $\mathbf{x}_{t-1|t-1} = (x_{t-1|t-1}, x_{t-2|t-1}, z_{t-1|t-1})'$ are agents' beliefs about \mathbf{x}_t at time t and \mathbf{x}_{t-1} at time $t-1$ respectively, κ is a vector of steady-state Kalman gains, A and C are the functions of underlying parameters of the model, and I is the 3×3 identity matrix.

Thus, substituting $x_{t|t}$ and $x_{t-1|t}$ obtained in Equation (7) onto Equation (6), we can easily solve the model for consumption.⁷

2.3 A mechanism to extract consumer confidence

To measure consumer confidence in this framework, we exploit “additional information beyond fundamentals” conveyed to consumers. This additional information is useful to understand what consumer confidence is.

To begin with, we exploit the fact that the signal extraction problem discussed in the last section can also be solved sequentially as in L’Huillier and Yoo (2017) and Yoo (2019). By doing so, we disentangle the effects of two signals, productivity a_t and a noisy signal s_t , on consumption fluctuations.

The following procedure details how we obtain our measure of consumer confidence. Denote agents’ expectations about a state vector \mathbf{x}_t with current productivity and lagged information by

$$\mathbf{x}_{t|a_t} = \mathbb{E}[\mathbf{x}_t | \Omega_t]$$

where $\Omega_t = (a_t, \mathcal{I}_{t-1})$ such that $\Omega_t \in \mathcal{I}_t$ and $\Omega_t \cup s_t \equiv \mathcal{I}_t$.

Conditional on agents’ beliefs at time $t-1$, $\mathbf{x}_{t-1|t-1}$, where agents’ information set includes only productivity a_t (other than those available at time $t-1$), the belief updating is given by

$$\mathbf{x}_{t|a_t} = A\mathbf{x}_{t-1|t-1} + H(a_t - a_{t|t-1}) \quad (8)$$

where $\mathbf{x}_{t|a_t} = (x_{t|a_t}, x_{t-1|a_t}, z_{t|a_t})'$ and H is the steady state Kalman gain for ob-

⁷See Appendix D.1 for a detailed derivation of the model solution.

servicing productivity a_t .

Moreover, conditional on agents' beliefs $\mathbf{x}_{t|a_t}$, updating beliefs with the noisy signal s_t leads to

$$\mathbf{x}_{t|t} = \mathbf{x}_{t|a_t} + G(s_t - s_{t|t-1})$$

To study the role of information unrelated to present (or past) fundamentals in consumption dynamics, we consider the level of spending agents would have chosen with the information set Ω_t denoted by $c_{t|a_t}$:

$$c_{t|a_t} = \frac{1}{1 - \rho} (x_{t|a_t} - \rho x_{t-1|a_t})$$

such that without observing a noisy signal s_t , agents choose spending as a function of their beliefs about the current and lagged permanent productivity with the information set Ω_t .

We further define $\Delta c_{t|s_t}$ as consumption changes at time t due to information unrelated to present (or past) fundamentals:

$$\Delta c_{t|s_t} = \left(\frac{1}{1 - \rho} (G^1 - \rho G^2) \right) (s_t - x_{t|a_t})$$

where G^1 and G^2 are the first and second components of the steady-state Kalman gain G and represent respectively the gain of observing noisy signals on x_t and x_{t-1} . Thus, when s_t is greater than $x_{t|a_t}$, $\Delta c_{t|s_t}$ would be positive. Intuitively, when agents receive good information about the state of the economy ($s_t > x_{t|a_t}$), they would be willing to increase spending.

It is straightforward to show that

$$c_t = c_{t|a_t} + \Delta c_{t|s_t}$$

We can also define $\Delta c_{t|a_t}$, consumption changes at time t from the previous period's consumption due to fundamentals:

$$\Delta c_{t|a_t} = c_{t|a_t} - c_{t-1}$$

From Equation (8) and the definition of c_{t-1} , we have

$$\Delta c_{t|a_t} = \left(\frac{1}{1-\rho} (H^1 - \rho H^2) \right) (a_t - x_{t|t-1})$$

where H^1 and H^2 are the first and second components of the steady-state Kalman gain H and represent respectively the gain of observing productivity on x_t and x_{t-1} . Whenever a_t is greater than $x_{t|t-1}$, the last period's forecast on the permanent productivity component, $\Delta c_{t|a_t}$ is positive and vice versa: When agents receive good information compared to a benchmark (in this case, the last period's estimate on x_t), they would increase spending.

We have thus successfully disentangled changes in consumption into changes due to fundamentals and changes due to information unrelated to present (or past) fundamentals:

$$\Delta c_t = \Delta c_{t|s_t} + \Delta c_{t|a_t}$$

such that we can easily decompose the rate of consumption growth into two sub-components.

We define our measure of consumer confidence as follows.

Definition 1 The *Model-Based Consumer Confidence Index* (MB-CCI) at time t is given by

$$\text{Model-Based Consumer Confidence Index}_t = (\hat{s}_t - \hat{x}_{t|a_t})$$

where \hat{s}_t and $\hat{x}_{t|a_t}$ are the estimated noisy signal and beliefs about the permanent productivity component conditional on productivity at time t . Both of these series are estimated using the Kalman smoother.

The Model-Based Consumer Confidence Index (MB-CCI) retrieves the contribution of additional information unrelated to present (or past) fundamentals on actual consumption changes. Our interpretation of consumer confidence emphasizes that it is a relative measure. Confidence is inherently related to agents' information, but we are being careful to distinguish the sources of information

when measuring confidence.⁸

Throughout the paper, we also consider the medium-frequency MB-CCI, which we obtain by applying a band-pass filter at 32-200 frequencies. The main purpose of exploiting this medium frequency measure is to clearly visualize the slow-moving dynamics of MB-CCI, which is highly volatile due to the presence of noise shocks in our model.

In the next section, we estimate the MB-CCI and compare it against the survey-based counterpart for the U.S.

⁸Our confidence index is not simply related to news-type ingredients (a long-run productivity innovation ϵ_t or a long-run productivity process x_t) nor to the animal spirit-type ingredients (a pure noise shock ν_t or a noisy signal s_t). Rather, our confidence measure is related to additional information available to consumers beyond the information pertained in productivity/income.

3 Results for the U.S.

As discussed in the previous section, we solve the model sequentially and proceed to estimation. As econometricians, we can represent the dynamics of the model in a state-space form with the appropriate observation equations, which in this case includes productivity and consumption. Consumers' expectations are part of the unobserved state vector of the econometrician. The econometrician's Kalman filter is used to construct the likelihood function and to estimate the parameters of the model. The model is estimated by maximum likelihood. In Appendix D.2 we show how to compute the likelihood function for a general representative-agent model with signal extraction where the signal is delivered sequentially.

We first solve the consumers' Kalman filter. We then build the econometrician's filter taking into account consumers' expectations. (Consumers' expectations are included in the list of unobservable state variables.) Our estimation includes the demeaned first differences of the logarithm of labor productivity and of the logarithm of per-capita consumption as observables. The simplicity of this model allows extracting a significant amount of information using only these two series. We use a Kalman smoother to estimate the shocks to the permanent and the transitory component of productivity, the noise shock, and the unobservable state variables. Our sample is given by the period 1976:II–2019:III, which includes the recent Great Recession.

3.1 Data

Our dataset includes series on labor productivity and per capita real consumption expenditure. To construct a series for labor productivity (real GDP divided by the labor input), we use a quarterly real gross domestic product (GDPC1) from the U.S. Bureau of Economic Analysis and employment (LNS12000000Q) from the U.S. Bureau of Labor Statistics. Similarly, to construct a series for per capita real consumption expenditure (real consumption expenditure divided by the total population), we use a quarterly real personal consumption expenditure (PCECC96) and population (LNS10000000Q) where the first series was taken from the Bureau of Economic Analysis and the second series from the U.S. Bureau of Labor Statistics. Recession indicators for the United States are based on NBER-defined

recessions. For the consumer confidence index, we use the Index of Consumer Sentiment (ICS) from the University of Michigan.

3.2 Model estimation

We first present the estimation results for the model in Section 2. Table 1 reports the estimation results. The results show that the persistence parameter ρ is estimated to be highly persistent. Due to this high persistence, the standard deviation for permanent productivity shocks is very small. The standard deviation for noisy shocks is estimated to be large.

Table 1: Parameter Estimates, US 1976:II–2019:III

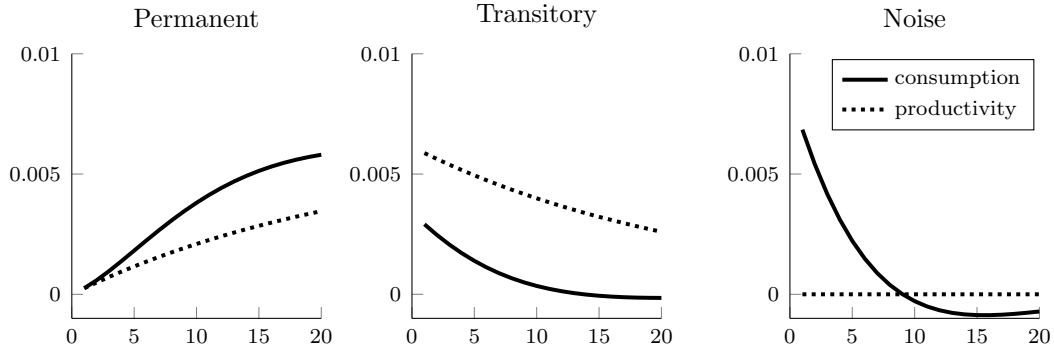
Parameter	Description	Value	s.e.
ρ	Persistence productivity	0.9613	0.0068
σ_u	Std dev. productivity	0.0058	0.0002
σ_ϵ	Std dev. permanent shock (implied)	0.0002	-
σ_η	Std dev. transitory shock (implied)	0.0057	-
σ_ν	Std dev. noise shock	0.0121	0.0036

Notes: The parameter σ_u defined by the standard deviation of Δa_t . Given the random walk Assumption (2) for a_t , σ_ϵ and σ_η are determined by ρ and σ_u . As they are indirectly recovered, no standard errors are given.

Figure 1 reports impulse responses of productivity and consumption following three exogenous shocks. We use the estimated parameters in Table 1. Due to a high productivity persistence, productivity gradually builds up (in the case of permanent technology shock) and slowly declines after an initial increase (in the case of transitory technology shock). A noise shock does not affect productivity. Following a permanent productivity shock, consumption gradually increases. Due to large volatilities in transitory and noise shocks, consumers cannot immediately recognize the permanent shock and adjust consumption slowly. In response to a transitory productivity shock, consumption initially increases but returns to normal over time. Following a noise shock, consumption initially increases and slowly declines.

Figure 2 reports the implications of the estimated parameters in Table 1 for the variance decomposition of consumption, summarizing the contribution of the three shocks to the forecast error variance. We observe that noise shocks are a very

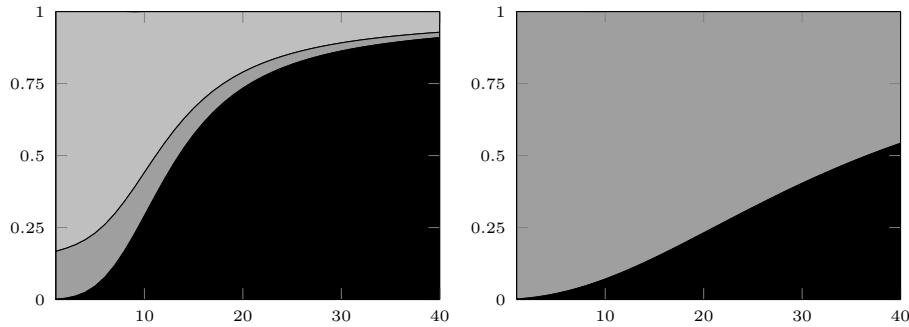
Figure 1: Impulse responses



Notes: Productivity does not respond to a noise shock.

important source of short- to medium-run volatility, explaining more than 60% of consumption volatility at a one-year horizon (light gray areas). On the contrary, both permanent (black areas) and transitory productivity (gray areas) shocks explain a much smaller fraction of consumption fluctuations, having almost no effect on quarterly volatility (permanent) and explaining less than 20% (transitory) at a one-year horizon.

Figure 2: Variance decomposition: consumption (left) and productivity (right)

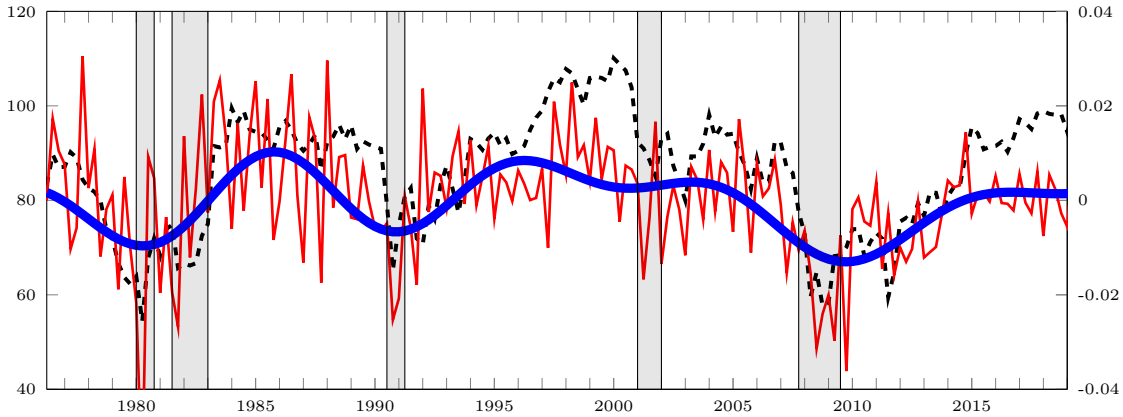


Notes: The *black* areas, the *gray* areas, and the *light gray* areas respectively represent a contribution of *permanent technology shocks*, *transitory technology shocks*, and *noise shocks* to consumption fluctuations over different time horizons.

3.3 Model-based consumer confidence for the U.S.

We now follow the procedure discussed in the last section and extract MB-CCI by smooth-estimating structural shocks and state variables. The solid lines in Figure 3 denote our model-based measures estimated for the sample period, and to compare our model-based consumer confidence to survey-based one, we also plot the Index of Consumer Sentiment (the thin and dashed, black line). The high-frequency measure (thin and full, red line) denotes our confidence measure as defined in Definition 1, and the medium frequency measure (thick and full, blue line) is the one isolating medium-run dynamics using a band-pass filter at 32-200 frequencies.

Figure 3: Model-Based Consumer Confidence Index (solid), and the (survey-based) Index of Consumer Sentiment (dashed)



Notes: Shaded areas indicate U.S. recessions. The red and thin solid line denotes the MB-CCI (blue and thick solid for the medium frequency MB-CCI), whereas the black and thin dashed line denotes the ICS. The ICS corresponds to the left y-axis and the MB-CCI to the right y-axis.

Our result shows that the correlation between the two indices is strictly positive (0.52) and statistically significant at the 1% level. For the medium frequency confidence measure the correlation is estimated at 0.79. In addition, most of U.S. recessions are characterized by preceding downward shifts and subsequent recovery in consumer confidence in both measures. Our approach to extracting consumer confidence does a good job of mimicking the dynamics of the survey-

based confidence index for the U.S. data.⁹

In order to justify our focus on what we have defined as MB-CCI, we also consider all other estimated series of beliefs, shocks, and states in our model. We compute their correlation with the survey-based consumer confidence measure. Table 2 reports the results. While some have a positive, statistically significant correlation with the survey-based confidence, namely beliefs about the long-run ($corr = 0.37$), permanent TFP ($corr = 0.16$), noisy signals ($corr = 0.23$), and noise shocks ($corr = 0.26$), our confidence measure exhibits a higher correlation than any other series of beliefs, shocks and states.

Table 2: Estimated unobserved shocks and states and the survey-based confidence

	Description	Correlation	p-val
$\hat{s}_t - \hat{x}_{t a_t}$	Our confidence measure (MB-CCI)	0.52	0.0001
	Our confidence measure (MB-CCI, medium frequency)	0.79	0.0001
$\hat{a}_{t+\infty t}$	Beliefs about the long-run	0.37	0.0001
\hat{v}_t	Noise shocks	0.26	0.0006
\hat{s}_t	Noisy signals	0.23	0.0022
\hat{x}_t	Permanent component	0.16	0.0397
$\Delta c_{t a_t}$	Consumption change due to fundamentals	0.13	0.0920
$\hat{z}_{t t}$	Beliefs about transitory component	0.08	0.2979
$\hat{x}_{t t}$	Beliefs about permanent component	0.05	0.5387
$\hat{\eta}_t$	Transitory productivity shocks	0.05	0.4956
\hat{e}_t	Permanent productivity shocks	0.03	0.6722
$\hat{x}_{t-1 t}$	Beliefs about lagged permanent component	0.03	0.7146
$\hat{x}_{t a_t}$	Beliefs about permanent component (with info. set Ω_t)	0.02	0.8287
\hat{z}_t	Transitory component	-0.10	0.1743

Notes: Correlation and p-val report the Pearson correlation coefficient and the associated p-value between the survey-based consumer confidence and the estimated variable of interest.

The finding that the MB-CCI is the measure that correlates the most with the ICS is of independent interest for the news shocks literature. Ex-ante, it is unclear why this measure ought to have the highest correlation, and not, for

⁹The Index of Consumer Sentiment (ICS) has two separate components - *Expected Index* and *Current Index*. *Expected Index* is aggregated using the answers to the forward-looking questions, whereas *Current Index* to the questions regarding the current situation. Separately estimating the correlation between these indices and our measure of consumer confidence, the correlation between *Expected Index* and our measure is 0.51 and the one between *Current Index* and our measure is 0.49.

example, beliefs about the long run ($\hat{a}_{t+\infty|t}$) or the noisy signal (\hat{s}_t). This offers a theoretical window to interpret what lies behind fluctuations in the ICS: most of the fluctuations represent fluctuations in beliefs that go beyond the beliefs that are implied by the observation of fundamentals as productivity or income.

To conclude, our main empirical contribution is to establish that the MB-CCI we have defined above closely mimics the ICS. We emphasize that this is achieved out-of-sample (the ICS is not used in the model estimation.) Therefore, conceptually, this establishes a bridge between the survey measure, and the news and noise model of consumer beliefs. Next, we will apply this insight to a cross-country exploration.

4 Consumer confidence across Europe

In this section, we extract model-based consumer confidence for fourteen selected European countries and make a comparison with European consumer confidence indices. (Below we explain our focus on these countries.) Similar to the observation in the U.S., recent economic crises have been associated with deteriorating consumer confidence in Europe as well.

4.1 Model estimation

We first present the estimation results for the model discussed in Section 2. The sample is from 1995:II–2019:III. The model is estimated by maximum likelihood. Our dataset includes series on labor productivity and per capita real consumption expenditure, and our sample includes fourteen European countries: the five founding member states of the EU - Belgium (BEL), France (FRA), (West) Germany (DEU), Italy (ITA), and the Netherlands (NLD) - along with nine other member states who joined the EU on or before January 1995 - Austria (AUT), Denmark (DNK), Finland (FIN), Greece (GRC), Ireland (IRL), Portugal (PRT), Spain (ESP), Sweden (SWE), and the United Kingdom (GBR). We focus on these fourteen countries in part due to data availability. Harmonized consumer surveys are conducted by the Directorate General for Economic and Financial Affairs for the European Union (EU) and the applicant countries.¹⁰ However, for some countries, the harmonized survey is only available from 2001 (Bulgaria, Cyprus, Latvia, Lithuania, Poland, and Romania), 2002 (Luxembourg and Malta), 2005 (Croatia), 2007 (Turkey), 2012 (Montenegro and North Macedonia), 2013 (Serbia), and 2016 (Albania). Thus, we do not include these countries along with other countries who became member states of the EU in the fourth wave of the enlargement in 2004.

To construct a series for labor productivity (real GDP divided by the labor input), we use a quarterly Real GDP from the OECD contained in the measure VORBASA and Total Employment from the Eurostat in the measure Total Employment - Domestic Concept. Both series are seasonally adjusted. Similarly, to

¹⁰The full list includes Belgium, Bulgaria, the Czech Republic, Denmark, Germany, Estonia, Ireland, Greece, Spain, France, Croatia, Italy, Cyprus, Latvia, Lithuania, Luxembourg, Hungary, Malta, Netherlands, Austria, Poland, Portugal, Romania, Slovenia, the Slovak Republic, Finland, Sweden, the United Kingdom, Montenegro, North Macedonia, Albania, Serbia, and Turkey.

construct a series for per capita real consumption expenditure (real consumption expenditure divided by the total population), we use a quarterly Private Final Consumption Expenditure from the OECD contained in the measure VORBASA and Total Population from the Eurostat in the measure Total Population. Both series are seasonally adjusted. For the survey-based measure, we use the Consumer Confidence Index (CCI) from the OECD. Since it is published in monthly frequency, we change it to quarterly frequency by computing the quarterly arithmetic average at every quarter.

The estimation results show that the persistence parameter ρ is estimated to be high for all countries. Due to this high persistence, the standard deviation for permanent productivity shocks is very small. The estimates of the standard deviation for noisy shocks are, in general, large, but vary considerably across countries.¹¹

4.2 Model-based consumer confidence across Europe

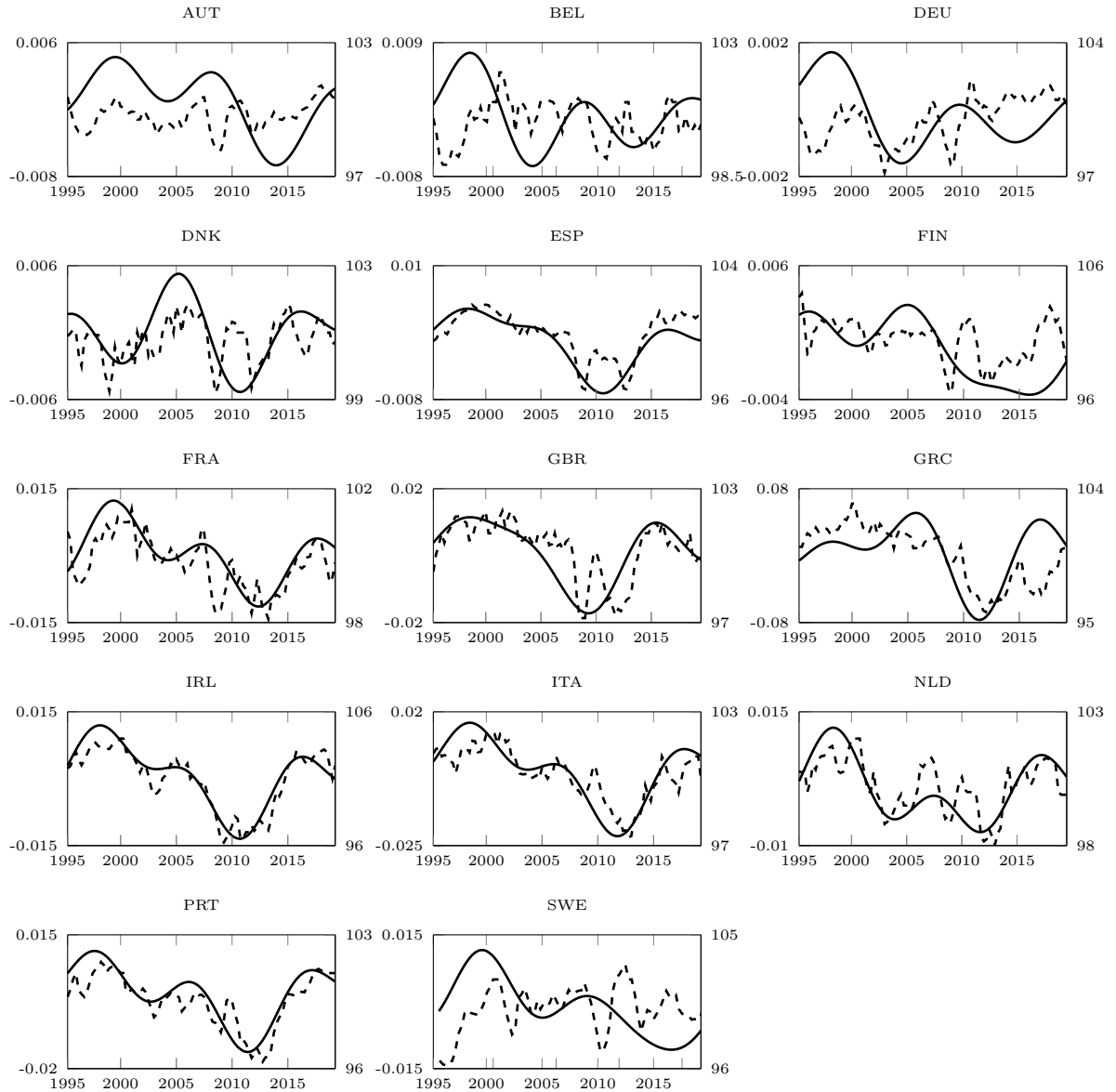
We extract consumer confidence by estimating the series of structural shocks and state variables using a Kalman smoother. We then use the same procedure described above and used for the U.S.

We first present a figure comparing the MB-CCI and the CCI for each country. Among the high- and medium-frequency measures of MB-CCI, the medium-frequency measure allows for a clearer visual comparison to the CCI, and therefore we present this one here in the body. (See Figure A6 in Appendix G for the other one.) See Figure 4. It plots the MB-CCI using solid lines, and the CCI from OECD using dashed lines.

As it is clear from the figure, most countries exhibit sizable fluctuations in confidence according to both measures. Consumer confidence appears to be persistent. In several cases, there is a decline of confidence that is contemporaneous to or lags the global financial crisis of 2008. We observe that there is an extended period of lack of consumer confidence for many countries, which corresponds well to the slow and anemic recovery from the Great Recession across Europe. As one would expect, this decline in confidence is more protracted for periphery countries as Portugal and Greece. Portugal and most countries exhibit high confidence in the early part of the sample, which presumably is related to widespread optimism

¹¹Table A1 in Appendix E reports the estimation results.

Figure 4: Model-Based Consumer Confidence Index (at Medium Frequency), and the OECD (Survey-Based) Consumer Confidence Index



Notes: The solid lines denote the MB-CCI (medium frequency) isolated with the band-pass filter at 32-200 frequencies. The dashed lines denote the (quarterly) Consumer Confidence Index (CCI) available from the OECD. Since it is published in monthly frequency, we change it to quarterly frequency by computing the quarterly arithmetic average at every quarter. The MB-CCI is plotted against the right y-axis, and OECD consumer confidence against to the left y-axis. For Sweden, the CCI is available only from 1995:IV (SWE).

regarding the European Economic and Monetary Union in the late 1990s.

Another interesting observation is that both measures seem to correlate strongly for some countries (as Italy), but less so for other countries (as, for instance, Germany). In order to look more deeply at this aspect, we compute the correlation between both measures and report it in Table 3. The table reports the correlation between our confidence measure and the survey-based counterpart. We report this correlation both for our high-frequency MB-CCI and for our medium-frequency MB-CCI. As explained in Section 2.3, the high-frequency MB-CCI corresponds simply to the measure obtained as in Definition 1. The medium-frequency MB-CCI corresponds to the resulting series after using a band-pass filter at 32-200 frequencies.

We find that, for most countries, the correlations between the two indices are strictly positive and statistically significant at the 1% level: for Spain, Italy, Portugal, the UK, Netherlands, Ireland, France, and Greece, for example, the correlations are estimated to be around 0.4 or greater, showing a clear correlation between the two indices. For some countries like Spain, Italy, Portugal, or the U.K., the degree of correlation is remarkable: higher than 0.70 in the case of the medium-frequency MB-CCI. At the same time, there are cases in which the correlations are quite small, as in the case of Austria, Belgium, or Sweden.

We draw two main conclusions from these results.

First, considering the high correlation of the MB-CCI with the CCI produced by the OECD based on a survey, the MB-CCI does seem like a valid approach to measure consumer confidence. This is more clearly the case for countries that exhibit a high correlation (top rows on Table 3), which is most European countries (these tend to be countries for which there appear to have been larger confidence swings, as we will discuss below.) Moreover, given the solid theoretical basis of the MB-CCI and how easily it can be obtained from national accounts data, it is, at the very least, a complementary measure to the CCI in the case of all the other countries.

Second, there is a striking amount of heterogeneity in the correlation between the MB-CCI and CCI. Indeed, this correlation behaves like in the U.S. for some countries (high and statistically significant correlation, as in the case of Spain with a correlation of 0.63), and with the opposite pattern for other countries (as in the case of Belgium, with a correlation of 0.01). This is a puzzling observation given

Table 3: Correlation between our model-based confidence measure and OECD consumer confidence index (14 European countries)

	Correlation			
	High frequency	p-val	Medium frequency	p-val
ESP	0.63	0.0001	0.85	0.0001
ITA	0.54	0.0001	0.85	0.0001
PRT	0.53	0.0001	0.87	0.0001
GBR	0.49	0.0001	0.71	0.0001
NLD	0.48	0.0001	0.76	0.0001
IRL	0.46	0.0001	0.93	0.0001
FRA	0.41	0.0001	0.77	0.0001
GRC	0.39	0.0001	0.52	0.0001
DNK	0.25	0.0119	0.52	0.0001
SWE	0.15	0.1384	0.04	0.7087
DEU	0.07	0.5159	-0.03	0.7522
FIN	0.02	0.8108	0.39	0.0001
BEL	0.01	0.9680	-0.13	0.1893
AUT	-0.05	0.6497	0.08	0.4443

Notes: *Correlation* and *p-val* report the Pearson correlation coefficient and the associated p-value. *The high-frequency measure* denotes the smoothed-estimated confidence as in Definition 1, and *the medium frequency measure* is the one isolating medium-run dynamics using a band-pass filter at 32-200 frequencies.

that the input used to obtain the MB-CCI is obtained from uniformly constructed data, with an identical model and estimation procedure for all countries. Moreover, the CCI survey is conducted by the same institution, and as far as we can tell from studying its description, it is based on a uniform set of questions and procedures.¹² Hence, an obvious question is to what extent one can shed light on this finding. We briefly look at this next.

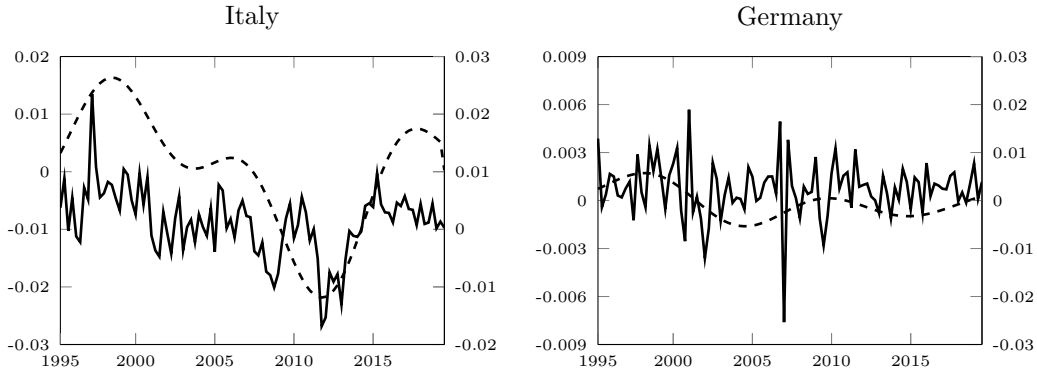
¹²The CCI survey is part of regular harmonized surveys conducted by the Directorate General for Economic and Financial Affairs for different sectors of the economies in the European Union (EU) and in the applicant countries. The methodology of the survey including national questionnaires, partner institutes, and guidelines are available from the following link: https://ec.europa.eu/info/business-economy-euro/indicators-statistics/economic-databases/business-and-consumer-surveys/methodology-business-and-consumer-surveys_en.

4.3 What could explain the heterogeneity across countries?

As shown earlier, we observe a surprisingly high amount of heterogeneity in the relation of MB-CCI and the CCI of the OECD. What accounts for such observed heterogeneity?

In our sample, the high correlation countries include the U.K., Netherlands, France, and the PIIGS countries, i.e., Portugal, Ireland, Italy, and Spain. One possibility from this observed pattern is the presence of large fluctuations, particularly during the 2008 global financial crisis and its aftermath in Europe. To illustrate this point, consider Figure 5, plotting the MB-CCI and annualized quarterly consumption growth rates for two polar countries, Italy and Germany. Italy was hard hit by the European debt crisis, and this generated a protracted consumption recession starting. Instead, consumption recovered quickly after 2008 in the case of Germany. As a result, the swings in consumer confidence in Italy are more dramatic. Accordingly, the correlation between the MB-CCI and the CCI is high for Italy (0.54), and low for Germany (0.07).

Figure 5: Model-based consumer confidence (dashed) and consumption growth rates (solid): Italy (left) and Germany (right)



Notes: The solid lines denote annualized quarterly consumption growth rates. The dashed lines denote the MB-CCI (medium frequency) isolated with a band-pass filter at 32-200 frequencies. The consumption growth rates correspond to the right y-axis and the MB-CCI to the left y-axis.

To make this point more precisely, we consider this heterogeneity from a statistical perspective. Let the MB-CCI, $s_{1,t}$, be the sum of true unobservable confi-

dence, κ_t and a disturbance term $e_{1,t}$:

$$s_{1,t} = \kappa_t + e_{1,t}$$

where $e_{1,t}$ is an i.i.d. Gaussian disturbance. Similarly, let the CCI, $s_{2,t}$, be the sum of true confidence and a different disturbance term $e_{2,t}$:

$$s_{2,t} = \kappa_t + e_{2,t}$$

where $e_{2,t}$ is an i.i.d. Gaussian disturbance and $e_{1,t} \perp e_{t+j}$ for all t and j .

The disturbance terms could be interpreted as measurement errors. For the survey measure of confidence, there is the problem of sampling the population. Also, each participant answers the survey on a particular day while consumption and productivity are averages over quarters. This adds measurement error to the survey. In contrast, the model-based measure of confidence is very simple and clearly imperfect. It is correlated with survey confidence, but we would not claim it is true confidence measured without error.

As shown by this Equation (9)

$$\text{Corr} = \frac{\text{var}(\kappa)}{\left(\left(\text{var}(\kappa) + \text{var}(e_1)\right)\left(\text{var}(\kappa) + \text{var}(e_2)\right)\right)^{1/2}} \quad (9)$$

the correlation between s_1 and s_2 is an increasing function of the variance of true confidence κ_t . Thus, if the differences across countries are mostly $\text{var}(\kappa)$, that is, the variance of true confidence, the correlation between MB-CCI and CCI should be high.

Let us take the survey confidence measure itself to compute its volatility. Table 4 suggests that the correlation between the two measures of consumer confidence is related to the volatility of the survey confidence measure: a high correlation between two measures of consumer confidence is related to a larger volatility of the survey index.

Second, we look at the observed heterogeneity from a socio-economic perspective. Given the small sample size ($n = 14$), it is difficult to determine structural factors delivering heterogeneity in terms of the correlation across countries. However, we can still see if the correlations reported on Table 3 are related to a range

Table 4: The volatility of confidence index and correlation between the two confidence measures

	Correlation		Volatility
	High frequency	Medium frequency	
Whole sample	0.31	0.51	1.213
High correlation	0.49	0.78	1.363
Low correlation	0.08	0.15	1.012

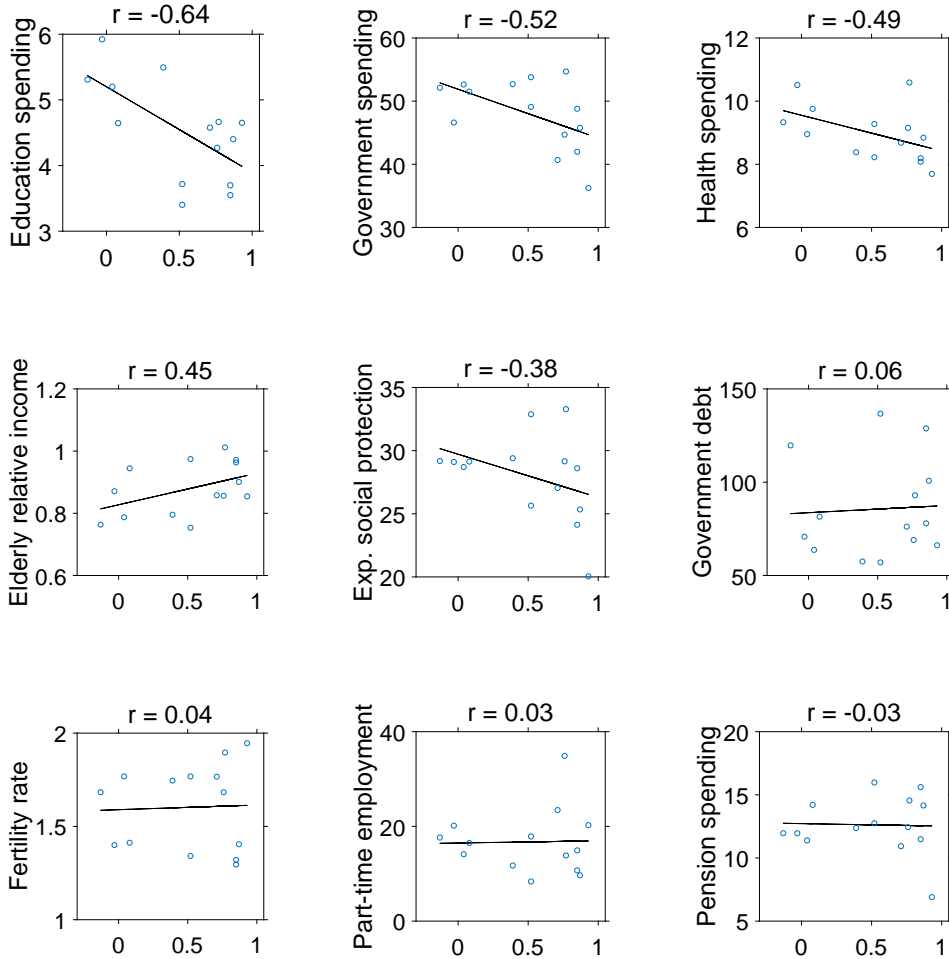
Notes: *Correlation* denotes the average correlation coefficients between the model-based and survey-based consumer confidence in the sample, and *Volatility* denotes the average standard deviation of the survey-based consumer confidence in the respective sample. The first sub-sample (high correlation) contains those countries with the correlation between the model-based and survey consumer confidence higher than 0.39 and includes Spain, Italy, Portugal, the UK, Netherlands, Ireland, France, and Greece; the second sub-sample (low correlation) contains those with the correlation smaller than 0.25 in absolute terms and includes Austria, Belgium, Finland, Germany, and Sweden.

of indicators of social, economic, and financial development. To this end, we show Figure 6 the relationship between observed correlation heterogeneity with selected economic, social, and institutional factors.¹³ Those that can potentially explain observed heterogeneity include public spending on education, general government spending, total health spending, and a median relative income of elderly people among others whereas general government debt, fertility rates, the part-time employment rate, and the expenditure on pensions exhibit virtually no relationship with the observed confidence correlation. (Figures A7 and A8 in Appendix G report results for another set of socio-economic variables.)

The most plausible explanation for the observed heterogeneity, though, is the degree to which the survey measure of consumption tracks actual consumption fluctuations. For those countries exhibiting a low correlation between our model-based index and the survey-based confidence measure, we also observe a low correlation between the survey-based one and observed consumption: Austria (0.05), Belgium (0.09), Germany (0.17), Finland (0.18), and Sweden (0.26). This finding is in stark contrast to the countries where the fit between two confidence measures is highly correlated (with the average correlation of 0.51 between the survey measure of confidence and actual consumption). It appears that when the survey measure does not replicate observed consumption dynamics, our model-based index cannot match it well as our measure is obtained using observed consumption and

¹³Appendix B gives a detailed description of these factors.

Figure 6: Correlation of confidence indices and economic, social, and institutional factors



Notes: The panels show the relationship between various economic, social, institutional measures and the correlation of two confidence indices. r reports the Pearson correlation coefficient. *Education spending* denotes public spending on education; *Government spending* denotes general government spending; *Health spending* denotes total health spending; *Elderly relative income* denotes a median relative income of elderly people; *Exp. social protection* denotes expenditure on social protection; *Government debt* denotes general government debt; *Pension spending* denotes the expenditure on pensions. For a detailed description of the variables, see Appendix B.2.

productivity.

5 Final remarks

We have shown how to extract consumer confidence using aggregate macroeconomic data based on a structural framework with imperfect information. We view ours as a viable approach to study consumer confidence, which is based on a standard consumer theory and the state-of-the-art macroeconomic toolbox. Not only do our efforts provide a theoretical interpretation to survey measures of confidence, but they also offer an internationally consistent measure of confidence grounded on the System of National Accounts.

We compare our measure of confidence with its survey-based counterpart by calculating the correlation between the two measures of consumer confidence. We have shown that the correlation between the two measures is remarkable for the U.S. and a range of European countries.

Our methodological approach relies on a particular economic mechanism (the permanent income model) and information structure (the combination of the permanent-transitory decomposition and the signal on the permanent component). They are analytically convenient and, more importantly, reasonable for the application at hand, as discussed in Section 2.1. Considering its simple nature, the model's actual performance in generating filtered confidence and matching the survey-based counterpart is striking and somewhat surprising. Nevertheless, an obvious next step is to explore more complex models. We leave this to future work.

References

- Angeletos, G.-M., F. Collard, and H. Dellas (2018). Quantifying confidence. *Econometrica* 86(5), 1689–1726.
- Angeletos, G.-M. and J. La’O (2013). Sentiments. *Econometrica* 81(2), 739–780.
- Barsky, R. B. and E. Sims (2012). Information, animal spirits, and the meaning of innovations in consumer confidence. *American Economic Review* 102(2), 1343–1377.
- Batchelor, R. and P. Dua (1998). Improving macro-economic forecasting: The role of consumer confidence. *International Journal of Forecasting* 14(1), 71–81.
- Beaudry, P. and F. Portier (2004). An exploration into Pigou’s theory of cycles. *Journal of Monetary Economics* 51, 1183–1216.
- Beaudry, P. and F. Portier (2006). Stock prices, news and economic fluctuations. *American Economic Review* 96(4), 1293–1307.
- Blanchard, O. J., J.-P. L’Huillier, and G. Lorenzoni (2013). News, noise, and fluctuations: An empirical exploration. *American Economic Review* 103(7), 3045–3070.
- Boz, E., C. Daude, and C. B. Durdu (2011). Emerging market business cycles: Learning about the trend. *Journal of Monetary Economics* 58(6), 616–631.
- Cao, D. and J.-P. L’Huillier (2018). Technological revolutions and the three great slumps: A medium-run analysis. *Journal of Monetary Economics* 96, 93–108.
- Chahrour, R. and K. Jurado (2018). News or noise? The missing link. *American Economic Review* 108(7), 1702–1736.
- Chahrour, R. and K. Jurado (2021). Optimal foresight. *Journal of Monetary Economics* (forthcoming).
- European Commission. The Joint Harmonised EU Programme of Business and Consumer Surveys. User Guide (Updated 4 July 2017).
- Howrey, E. P. (2001). The predictive power of the index of consumer sentiment. *Brookings Papers on Economic Activity* 2001(1), 175–207.

- Ilut, C. and M. Schneider (2014). Ambiguous business cycles. *American Economic Review* 104, 2368–2399.
- Lahiri, K., G. Monokroussos, and Y. Zhao (2015). Forecasting consumption: The role of consumer confidence in real time with many predictors. *Journal of Applied Econometrics* 31, 1254–1275.
- L’Huillier, J.-P. and D. Yoo (2017). Bad news in the Great Depression, the Great Recession, and other U.S. recessions: A comparative study. *Journal of Economic Dynamics and Control* 81, 79–98.
- L’Huillier, J.-P. and D. Yoo (2019). Where is the GE? Consumption dynamics in DSGEs. *Journal of Money, Credit and Banking* 51(6), 1491–1502.
- Lorenzoni, G. (2009). A theory of demand shocks. *American Economic Review* 99(5), 2050–84.
- Rousakis, M. (2013). Expectations and fluctuations: The role of monetary policy. *Mimeo*.
- Sahay, R., M. Cihak, P. N’Diaye, A. Barajas, R. Bi, D. Ayala, Y. Gao, A. Kyobe, L. Nguyen, C. Saborowski, K. Svirydzenka, and S. R. Yousefi (2015). Rethinking financial deepening: stability and growth in emerging markets. *IMF Staff Discussion Note* (15/08).
- Schmitt-Grohé, S. and M. Uribe (2012). What’s news in business cycles. *Econometrica* 80(6), 2733–2764.
- Svirydzenka, K. (2016). Introducing a new broad-based index of financial development. *IMF Working Paper* (16/05).
- Yoo, D. (2019). Ambiguous information, permanent income, and consumption fluctuations. *European Economic Review* 119(C), 79–96.

A Data appendix

A.1 The Index of Consumer Sentiment

The Index of Consumer Sentiment (ICS) is produced by the Survey Research Center of the University of Michigan. The ICS is calculated by computing the relative scores for each of the five index questions on past and future financial, business, and macroeconomics conditions. Specifically, for each index question (Q_i), you subtract the percent giving unfavorable replies from the percent giving favorable replies, then add 100 to compute the relative score X_i :

$$ICS = \frac{X_1 + X_2 + X_3 + X_4 + X_5}{\text{base score}} + 2.0$$

where X_1, \dots, X_5 denote the relative scores computed for each of the five index questions, *base score* refers to the 1966 base period total of 6.7558, and 2.0 on the second term on the RHS is a constant to correct for sample design changes from the 1950s.

The five index questions are as follows:

Q_1 : “We are interested in how people are getting along financially these days. Would you say that you (and your family living there) are better off or worse off financially than you were a year ago?”

Q_2 : “Now looking ahead—do you think that a year from now you (and your family living there) will be better off financially, or worse off, or just about the same as now?”

Q_3 : “Now turning to business conditions in the country as a whole—do you think that during the next twelve months we’ll have good times financially, or bad times, or what?”

Q_4 : “Looking ahead, which would you say is more likely—that in the country as a whole we’ll have continuous good times during the next five years or so, or that we will have periods of widespread unemployment or depression, or what?”

Q_5 : “About the big things people buy for their homes—such as furniture, a refrigerator, stove, television, and things like that. Generally speaking, do you think now is a good or bad time for people to buy major household items?”

The Index is available at <http://www.sca.isr.umich.edu/tables.html>.

A.2 Consumer Confidence Index

The consumer confidence indicator is calculated by computing the simple arithmetic average of the seasonally adjusted balances of answers to questions on the financial situation of households, the general economic situation, unemployment expectations, and savings over the next 12 months.

The questions relevant for computing the consumer confidence indicator are chosen from the full set of questions in the individual survey and are given as follows:

Q_2 : “How do you expect the financial position of your household to change over the next 12 months? ”

Q_4 : “How do you expect the general economic situation in this country to develop over the next 12 months?”

Q_7 : “How do you expect the number of people unemployed in this country to change over the next 12 months?”

Q_{11} : “Over the next 12 months, how likely is it that you save any money?”

For each questions, there are six possible answers, i.e., strongly positive, positive to neutral, negative, and strongly negative, as well as “don’t know.”

More details are available from the European Commission Directorate-General For Economic and Financial Affairs (European Commission).

[FOR ONLINE PUBLICATION]

Supplementary Material for “Confidence, Fundamentals, and Consumption”

Jean-Paul L’Huillier, Robert Waldmann, Donghoon Yoo
November 2021

B Economic and social factors

This section provides a detailed description of the variables used in Section 4.3 and Appendix G. The nine financial development indices are from the IMF Financial Development Index Database which is maintained by the IMF Strategy, Policy, and Review Department.¹⁴ Other variables are from the OECD database.

B.1 IMF Financial Development index

The Financial Development index is constructed using a three-step approach reducing multidimensional data into one summary index: (i) normalization of relevant variables; (ii) aggregation of normalized variables into the sub-indices representing a particular functional dimension; and (iii) aggregation of the sub-indices into the final index.¹⁵

Specifically, **Financial Development index** (FD) is the highest level aggregate index representing a relative ranking of countries on the depth, access, and efficiency of their financial institutions and financial markets. It is an aggregate of the Financial Institutions index and the Financial Markets index.

The Financial Institutions index (FI) is an aggregate of **the Financial Institutions Depth index** (FID), **the Financial Institutions Access index** (FIA), and **the Financial Institutions Efficiency index** (FIE). FID compiles data on bank credit to the private sector in percent of GDP, pension fund assets

¹⁴See Sahay et al. (2015) for details.

¹⁵IMF Financial Development Index Database contains information on its methodology and dataset (<https://data.imf.org/?sk=F8032E80-B36C-43B1-AC26-493C5B1CD33B>).

to GDP, mutual fund assets to GDP, and insurance premiums, life and non-life to GDP; FIA compiles data on bank branches per 100,000 adults and ATMs per 100,000 adults; FIE compiles data on banking sector net interest margin, lending-deposits spread, non-interest income to total income, overhead costs to total assets, return on assets, and return on equity.

The Financial Markets index (FM) is an aggregate of **The Financial Markets Depth index** (FMD), **The Financial Markets Access index** (FMA), and **The Financial Markets Efficiency index** (FME). FMD compiles data on stock market capitalization to GDP, stocks traded to GDP, international debt securities of government to GDP, and total debt securities of financial and non-financial corporations to GDP; FMA compiles data on the percent of market capitalization outside of 10 largest companies and the total number of issuers of debt (domestic and external, nonfinancial and financial corporations) per 100,000 adults; FME compiles data on the stock market turnover ratio (stocks traded to capitalization).

For a detailed description, see Svirydzienka (2016).

B.2 OECD data

The following variables are taken from the OECD database: variables on education (public spending on education), on society (expenditure on social protection, median relative income of elderly people, pension spending, the aggregate replacement ratio, total fertility rate), on health (health spending), on government (general government debt, general government deficit, general government financial wealth, general government spending), on jobs (adequacy of minimum income benefits, employment rates, hours worked, part-time employment, the gender wage gap), and on the economy (household saving, household spending).

Public spending on education includes direct expenditure on educational institutions as well as educational-related public subsidies given to households and administered by educational institutions. This indicator is shown as a percentage of GDP, divided by primary, primary to post-secondary non-tertiary, and tertiary levels. Public spending includes expenditure on schools, universities, and other public and private institutions delivering or supporting educational services.

Expenditure on social protection contains social benefits, which consist of transfers, in cash or in-kind, to households and individuals to relieve them of the

burden of a defined set of risks or needs; administration costs, which represent the costs charged to the scheme for its management and administration; other expenditure, which consists of miscellaneous expenditure by social protection schemes (payment of property income and other). **Median relative income of elderly people** is defined as the ratio between the median equivalized disposable income of persons aged 65 or over and the median equivalized disposable income of persons aged between 0 and 64. **Pension spending** is defined as all cash expenditures (including lump-sum payments) on old-age and survivors pensions. Old-age cash benefits provide an income for persons retired from the labor market or guarantee incomes when a person has reached a ‘standard’ pensionable age or fulfilled the necessary contributory requirements. This indicator is measured in percentage of GDP. **The aggregate replacement ratio** is the gross median individual pension income of the population aged 65-74 relative to gross median individual earnings from work of the population aged 50-59, excluding other social benefits. **Total fertility rate** in a specific year is defined as the total number of children that would be born to each woman if she were to live to the end of her child-bearing years and give birth to children in alignment with the prevailing age-specific fertility rates. It is calculated by totaling the age-specific fertility rates as defined over five-year intervals. This indicator is measured in children per woman.

Health spending measures the final consumption of health care goods and services (i.e. current health expenditure) including personal health care (curative care, rehabilitative care, long-term care, ancillary services, and medical goods) and collective services (prevention and public health services as well as health administration), but excluding spending on investments. It is measured as a share of GDP, as a share of total health spending, and in USD per capita (using economy-wide PPPs).

General government debt measures the gross debt of the general government as a percentage of GDP. Debt is calculated as the sum of the following liability categories (as applicable): currency and deposits; debt securities, loans; insurance, pensions, and standardized guarantee schemes, and other accounts payable. **General government spending** indicates the size of government across countries. This indicator is measured in terms of thousand USD per capita and as a percentage of GDP. **General government deficit** is defined as the balance of income and expenditure of government, including capital income and capital expenditures.

This indicator is measured as a percentage of GDP. **General government financial wealth** is the total value of its financial assets minus the total value of its outstanding liabilities. The general government sector consists of central, state, and local governments as well as social security funds. This indicator is measured as a percentage of gross domestic product. For these variables, all OECD countries compile their data according to the 2008 System of National Accounts (SNA).

Part-time employment is defined as people in employment (whether employees or self-employed) who usually work less than 30 hours per week in their main job. Employed people are those aged 15 and over who report that they have worked in gainful employment for at least one hour in the previous week or who had a job but were absent from work during the reference week while having a formal job attachment. This indicator shows the proportion of persons employed part-time among all employed persons. **The gender wage gap** is defined as the difference between median earnings of men and women relative to the median earnings of men. Data refer to full-time employees on the one hand and to self-employed on the other. **(Average annual) hours worked** is defined as the total number of hours actually worked per year divided by the average number of people in employment per year. Actual hours worked include regular work hours of full-time, part-time, and part-year workers, paid and unpaid overtime, hours worked in additional jobs, and exclude time not worked because of public holidays, annual paid leave, own illness, injury and temporary disability, maternity leave, parental leave, schooling or training, slack work for technical or economic reasons, strike or labor dispute, bad weather, compensation leave, and other reasons. The data cover employees and self-employed workers. This indicator is measured in terms of hours per worker per year. **Adequacy of minimum income benefits** measures the income of jobless families relying on guaranteed minimum income benefits as a percentage of the median disposable income in the country. Housing supplements are included subject to relevant eligibility conditions. **Employment rates** are calculated as the ratio of the employed to the working-age population. Employed people are those aged 15 or over who report that they have worked in gainful employment for at least one hour in the previous week or who had a job but were absent from work during the reference week. The working-age population refers to people aged 15 to 64. This indicator is seasonally adjusted and it is measured in terms of thousand persons aged 15 and over; in numbers of employed persons

aged 15 to 64 as a percentage of working-age population.

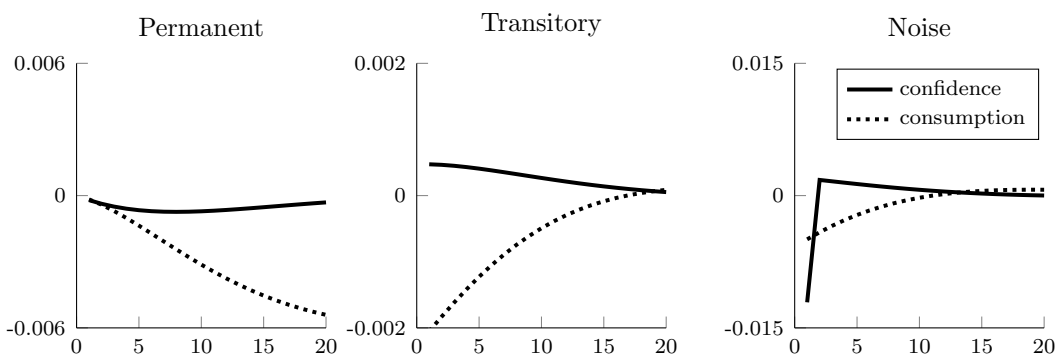
(Net) household saving is defined as household net disposable income plus the adjustment for the change in pension entitlements less household final consumption expenditure (households also include non-profit institutions serving households). The adjustment item concerns (mandatory) saving of households, by building up funds in employment-related pension schemes. The net household saving rate represents the total amount of net saving as a percentage of net household disposable income. It thus shows how much households are saving out of current income and also how much income they have added to their net wealth. **Household spending** is the amount of final consumption expenditure made by resident households to meet their everyday needs, such as food, clothing, housing (rent), energy, transport, durable goods (notably cars), health costs, leisure, and miscellaneous services. Household spending including government transfers (referred to as “actual individual consumption” in national accounts) is equal to households’ consumption expenditure plus those expenditures of general government and non-profit institutions serving households (NPISHs) that directly benefit households, such as health care and education. Household spending including government transfers is measured as a percentage of GDP. For these variables, all OECD countries compile their data according to the 2008 System of National Accounts (SNA 2008).

C Consumption and confidence in the model

In this section, we look at how consumption and MB-CCI comove (in the model). Figure A1 shows the dynamics of consumption and confidence following alternative structural shocks affecting the economy: Specifically, we consider the impulse responses of consumption and confidence following one standard deviation negative shock to permanent productivity, transitory productivity, and the signal. In our description, we focus mainly on the sign of the responses.

With a permanent decrease in productivity, consumption slowly decreases to its new long-run level while confidence does not get affected by much. A (negative) transitory shock generates an initial decrease in consumption, but consumption returns to its original level. On the contrary, confidence initially moves in the opposite direction of consumption and returns to its original level in the long run. Following a negative noise shock, consumption behaves qualitatively similar to the response to a negative transitory shock. However, the response of confidence is much greater on impact as it moves in the same direction with consumption. After the first period, the behavior is qualitatively similar to the ones with a transitory shock. Quantitatively, we can see that the dynamics of confidence are mostly driven by noise shocks.

Figure A1: Impulse responses: confidence and consumption



Notes: We use parameter values estimated in Table 1 to deliver impulse responses following one standard deviation negative shocks.

D Solution

D.1 Solving the model

Consider the dynamic system:

$$\begin{aligned}\mathbf{x}_t &= A\mathbf{x}_{t-1} + B\mathbf{v}_t \\ \mathbf{s}_t &= C\mathbf{x}_t + D\mathbf{v}_t\end{aligned}$$

and $\mathbf{x}_t = (x_t, x_{t-1}, z_t)'$, $\mathbf{v}_t = (\epsilon_t, \eta_t, \nu_t)'$, $\mathbf{s}_t = (a_t, s_t)'$,

$$A = \begin{bmatrix} 1 + \rho & -\rho & 0 \\ 1 & 0 & 0 \\ 0 & 0 & \rho \end{bmatrix}, B = \begin{bmatrix} 1 & 0 & 0 \\ 0 & 0 & 0 \\ 0 & 1 & 0 \end{bmatrix}, C = \begin{bmatrix} 1 & 0 & 1 \\ 1 & 0 & 0 \end{bmatrix}, D = \begin{bmatrix} 0 & 0 & 0 \\ 0 & 0 & 1 \end{bmatrix}$$

Conditional on observing current productivity a_t , consumers' beliefs $\mathbf{x}_{t|a_t}$ are given by

$$\begin{aligned}\mathbf{x}_{t|a_t} &= A\mathbf{x}_{t-1|t-1} + H(a_t - a_{t|t-1}) \\ &= [I - HC_1]A\mathbf{x}_{t-1|t-1} + Ha_t\end{aligned}\tag{10}$$

where H is the Kalman gain for observing productivity,

$$a_t = C_1\mathbf{x}_t + D_1\mathbf{v}_t$$

and $C_1 = \begin{bmatrix} 1 & 0 & 1 \end{bmatrix}$, $D_1 = \begin{bmatrix} 0 & 0 & 0 \end{bmatrix}$.

Then, observing a noisy signal s_t consumers' beliefs $\mathbf{x}_{t|t}$ are given by

$$\begin{aligned}\mathbf{x}_{t|t} &= \mathbf{x}_{t|a_t} + G(s_t - s_{t|a_t}) \\ &= [I - GC_2]\mathbf{x}_{t|a_t} + Gs_t\end{aligned}\tag{11}$$

where G is the gain of observing new information s_t ,

$$s_t = C_2\mathbf{x}_t + D_2\mathbf{v}_t$$

and $C_2 = \begin{bmatrix} 1 & 0 & 0 \end{bmatrix}$, $D_2 = \begin{bmatrix} 0 & 0 & 1 \end{bmatrix}$.

Substituting $\mathbf{x}_{t|a_t}$ from Equation (10) into Equation (11), we consumers' expectations $\mathbf{x}_{t|t}$ are given by

$$\mathbf{x}_{t|t} = [I - GC_2][I - HC_1]A\mathbf{x}_{t-1|t-1} + [I - GC_2]Ha_t + Gs_t$$

Once consumers' expectations are formed, consumption can be solved:

$$\begin{aligned} c_t &= \mathbb{E}_t [a_{t+\infty}] = \mathbb{E}_t [x_{t+\infty} + z_{t+\infty}] \\ &= \frac{1}{1 - \rho} \left(x_{t|t} - \rho x_{t-1|t} \right) \end{aligned}$$

D.2 Estimating the model

While the econometrician does not observe noisy signals, her information set includes productivity signals, assumed to be publicly available, and consumption observations. Thus, she extracts consumers' beliefs using all available information with the following Kalman filter:

$$\mathbf{x}_{t|a_t} = \begin{bmatrix} x_{t|a_t} \\ x_{t-1|a_t} \\ z_{t|a_t} \end{bmatrix} = A \begin{bmatrix} x_{t-1|t-1} \\ x_{t-2|t-1} \\ z_{t-1|t-1} \end{bmatrix} + H \begin{bmatrix} 1 + \rho & -\rho & -\rho \end{bmatrix} \begin{bmatrix} x_{t-1} \\ x_{t-2} \\ z_{t-1} \end{bmatrix} + H\epsilon_t + H\eta_t \quad (12)$$

Conditional on $\mathbf{x}_{t|a_t}$, $\mathbf{x}_{t|t}$ is given by

$$\begin{bmatrix} x_{t|t} \\ x_{t-1|t} \\ z_{t|t} \end{bmatrix} = \begin{bmatrix} x_{t|a_t} \\ x_{t-1|a_t} \\ z_{t|a_t} \end{bmatrix} + G \begin{bmatrix} 1 + \rho & -\rho & 0 \end{bmatrix} \begin{bmatrix} x_{t-1} \\ x_{t-2} \\ z_{t-1} \end{bmatrix} + G\epsilon_t + G\eta_t + G\nu_t \quad (13)$$

We let \mathbf{x}_t^E to represent the state vector of the econometrician where

$$\mathbf{x}_t^E = (x_t, x_{t-1}, z_t, x_{t|t}, x_{t-1|t}, z_{t|t})'$$

then, \mathbf{x}_t^E follows

$$\mathbf{x}_t^E = Q\mathbf{x}_{t-1}^E + R(\epsilon_t, \eta_t, \nu_t)' \quad (14)$$

The matrices Q and R , which depend on the underlying parameters of the model, are given respectively by

$$Q = \begin{bmatrix} A & \mathbf{0} \\ \mathbf{Q} & \mathbf{A} \end{bmatrix}$$

$$R = \begin{bmatrix} B \\ \mathbf{R} \end{bmatrix}$$

where \mathbf{Q} , \mathbf{R} , and \mathbf{A} are given by

$$\mathbf{Q} = B \begin{bmatrix} 1 + \rho & -\rho & \rho \\ 1 + \rho & -\rho & 0 \end{bmatrix}$$

$$\mathbf{R} = B \begin{bmatrix} 1 + \rho & 0 & 0 \\ 1 + \rho & 0 & 0 \end{bmatrix} + B \begin{bmatrix} 1 + \rho & 0 & 0 \\ 1 + \rho & 0 & 0 \end{bmatrix} + B \begin{bmatrix} 1 + \rho & 0 & 0 \\ 1 + \rho & 0 & 0 \end{bmatrix}$$

$$\mathbf{A} = [I - HC_1] [I - GC_2] A$$

The observation equation is given by

$$(a_t, c_t) = T\mathbf{X}_t^E \quad (15)$$

where

$$T = \begin{bmatrix} 1 & 0 & 1 & 0 & 0 & 0 \\ 0 & 0 & 0 & 1/(1-\rho) & \rho/(1-\rho) & 0 \end{bmatrix}$$

We then can build the state space representation of the model using (12), (13), (14) and (15) and structurally estimate it.

E Estimation results for the European countries

Table A1: Parameter estimates (14 European countries), 1995:II-2019:III

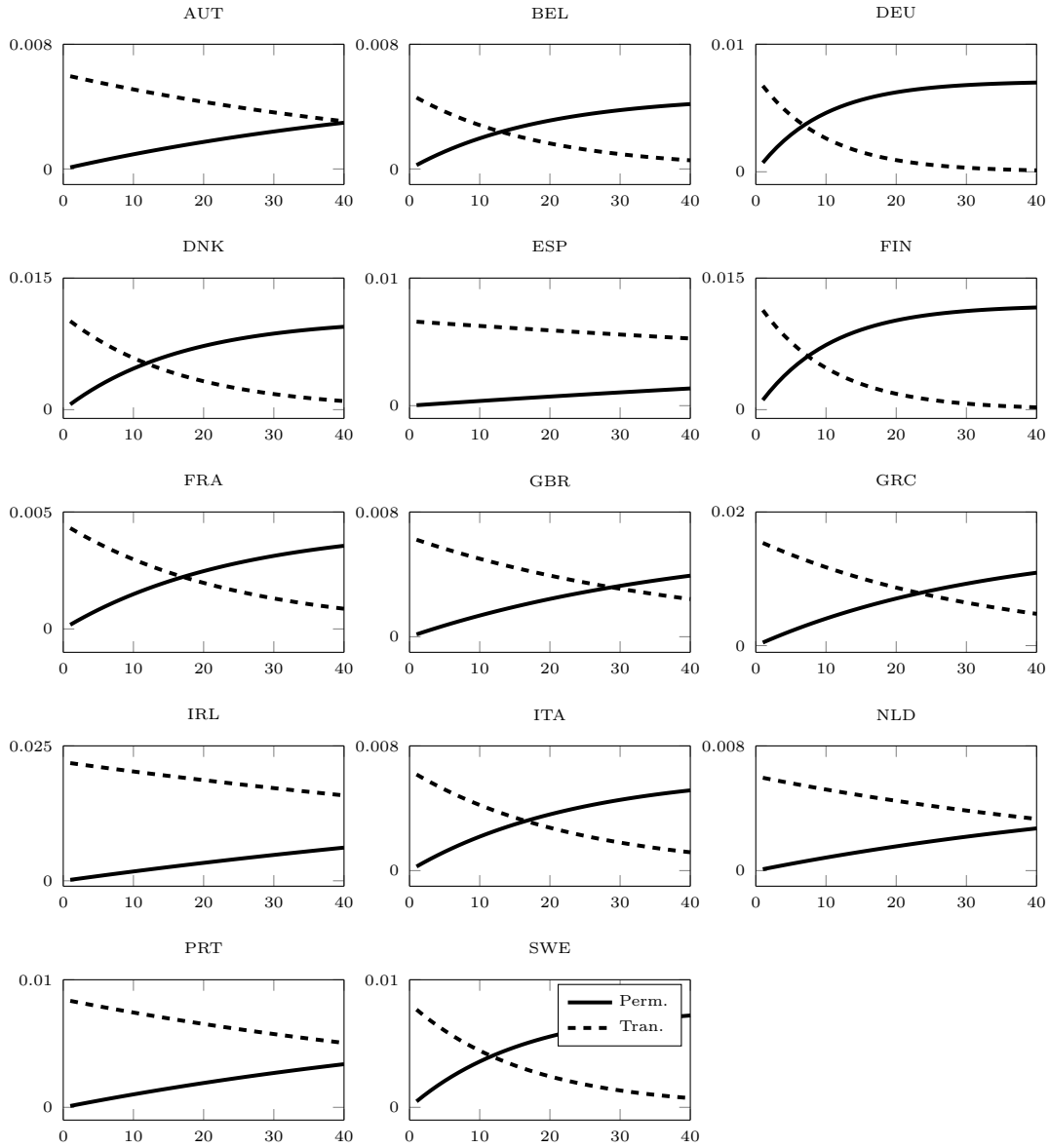
	Persistence (ρ)	Std. Perm. (σ_ϵ)	Std. Tran. (σ_η)	Std. Noise (σ_ν)
AUT	0.9825 (0.0082)	≤ 0.0001	0.0052	0.0119 (0.0061)
BEL	0.9511 (0.0137)	0.0002	0.0044	0.0112 (0.0046)
DEU	0.9067 (0.0338)	0.0007	0.0069	0.0041 (0.0026)
DNK	0.9312 (0.0283)	0.0007	0.0099	0.0084 (0.0048)
ESP	0.9942 (0.0021)	≤ 0.0001	0.0068	0.0039 (0.0015)
FIN	0.9185 (0.0455)	0.0009	0.0111	0.0144 (0.0087)
FRA	0.9630 (0.0095)	0.0002	0.0041	0.0155 (0.0050)
GBR	0.9748 (0.0069)	0.0001	0.0058	0.0153 (0.0052)
GRC	0.9713 (0.0074)	0.0004	0.0142	0.0716 (0.0213)
IRL	0.9868 (0.0082)	0.0003	0.0230	0.0283 (0.0204)
ITA	0.9658 (0.0086)	0.0002	0.0061	0.0190 (0.0083)
NLD	0.9693 (0.0085)	0.0002	0.0080	0.0124 (0.0053)
PRT	0.9720 (0.0118)	0.0003	0.0091	0.0130 (0.0089)
SWE	0.9388 (0.0169)	0.0005	0.0076	0.0233 (0.0072)

Notes: The parameter σ_u defined by the standard deviation of Δa_t . Given the random walk Assumption (2) for a_t , σ_ϵ and σ_η are determined by ρ and σ_u . As they are indirectly recovered, no standard errors are given.

Figures A2 and A3 report impulse responses of productivity and consumption following three exogenous shocks for the fifteen countries in the sample. We use the estimated parameters in Table A1. Due to a high productivity persistence, productivity in general gradually builds up (in the case of permanent tech shock) and slowly declines after an initial increase (in the case of transitory tech shock). A noise shock does not affect productivity.

Figure A3 shows that consumption slowly increases following a permanent tech shock. This is because the large volatilities in transitory productivity and noise shocks prohibit agents from immediately recognizing the permanent productivity change. Thus, they adjust consumption slowly. Similarly, it takes time for consumers to recognize a temporal change in productivity or a noisy disturbance and reduce consumption after an initial impulse following a transitory tech. shock or a noise shock. How fast the adjustment takes place and how large the magnitude of adjustments depends on the estimated volatilities of the shocks.

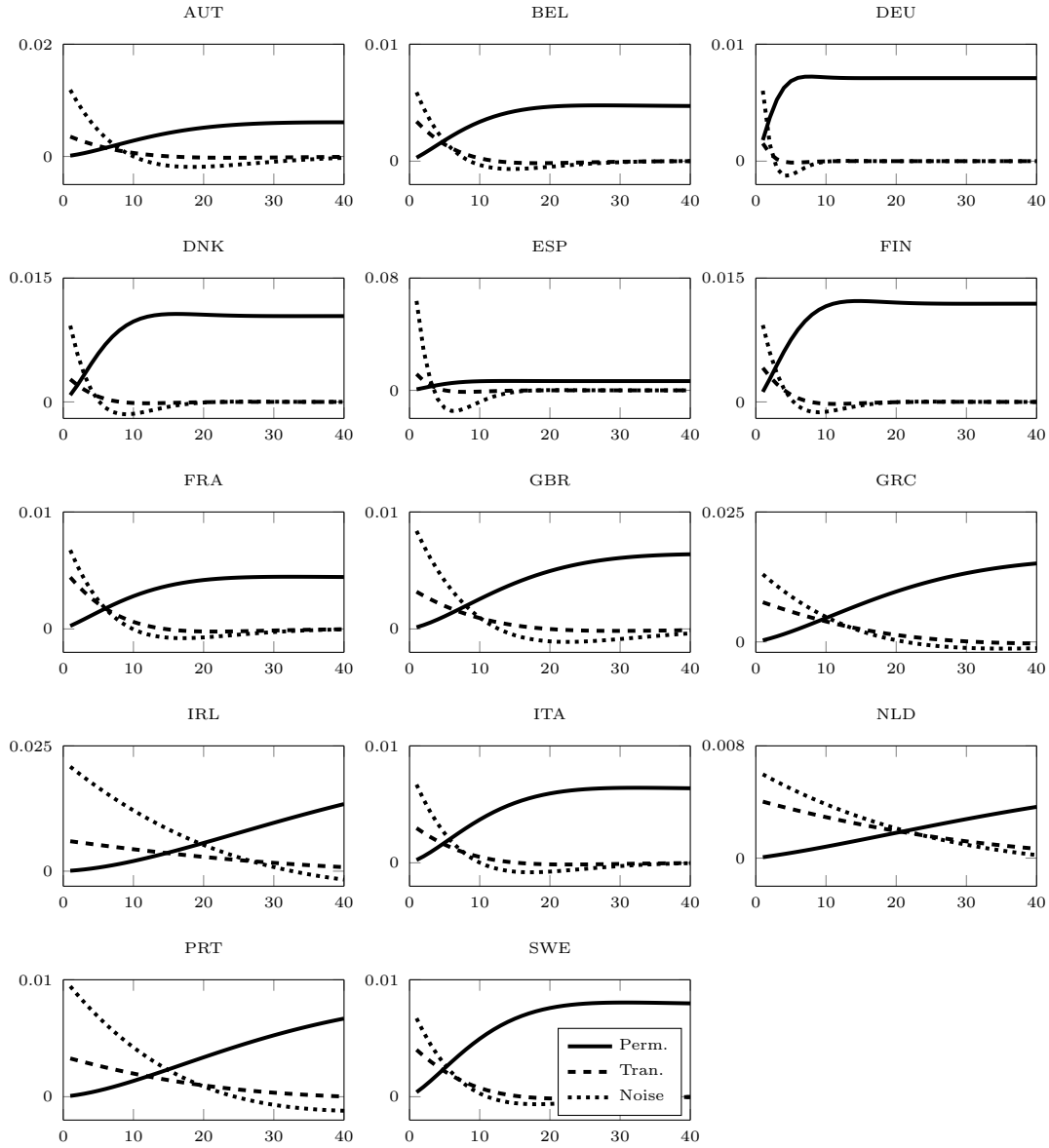
Figure A2: Impulse responses: productivity



Notes: Plots correspond to the impulse responses of productivity following technology shocks of one standard deviation. The solid lines correspond to the impulse responses of permanent productivity shocks; the dashed lines to those of transitory productivity shocks. Productivity does not respond to a noise shock.

Figure A4 reports the implications of the estimated parameters in Table A1 for the variance decomposition of consumption, summarizing the contribution of the three shocks to the forecast error variance. We observe that across countries noise shocks are a very important source of short to medium run volatilities, explaining

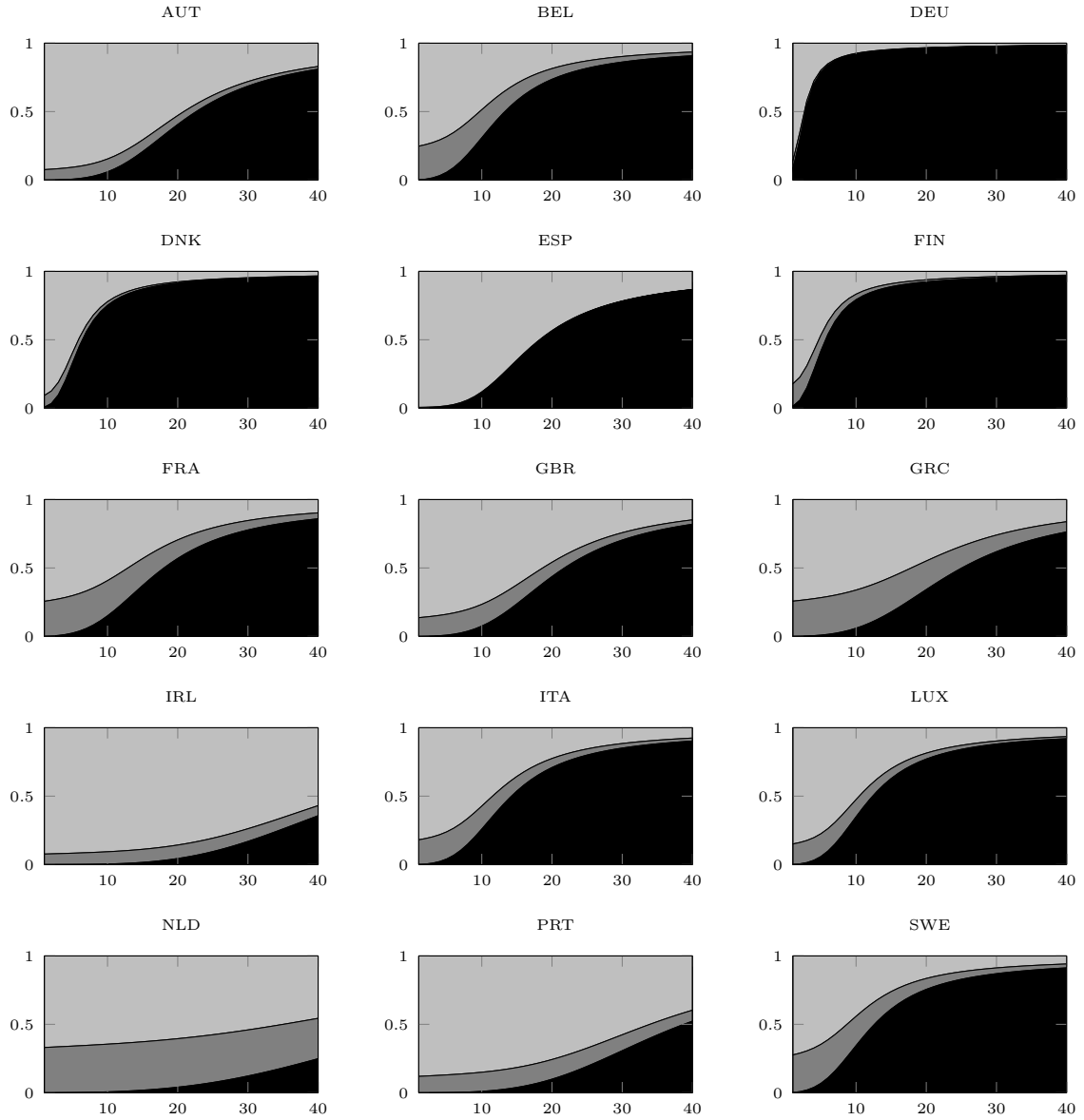
Figure A3: Impulse responses: consumption



Notes: Plots correspond to the impulse responses of consumption to three shocks of one standard deviation. The solid lines correspond to the impulse responses of permanent productivity shocks; the dashed lines to those of transitory productivity shocks; the dotted lines to those of noise shocks.

more than 60 to more than 90% of consumption volatility at a one-year horizon. On the contrary, both permanent and transitory productivity shocks explain a much smaller fraction of consumption fluctuations, having almost no effect on quarterly volatility (permanent) and explaining less than 20% (transitory) for most countries

Figure A4: Variance Decomposition, 1995:II-2016:III



Notes: The *black* areas, the *gray* areas, and the *light gray* areas respectively represent a contribution of *permanent technology shocks*, *transitory technology shocks*, and *noise shocks* to consumption fluctuations over different time horizons.

at a one-year horizon. At the same time, we observe heterogeneity across countries. For example, noise shocks are still an important source of consumption fluctuations even at a ten-year horizon for countries such as Greece, Ireland, Netherlands,

Portugal, Spain, and the UK.

F The alternative productivity process specification and estimated consumer confidence

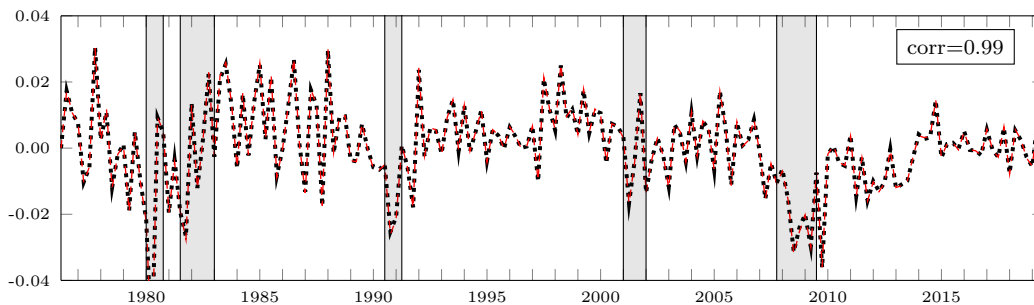
We relax the parameter restrictions from Equations (3) and (4) and present the estimation results for the model in Section 2. We jointly estimate a set of parameters $(\rho_x, \rho_z, \sigma_\epsilon, \epsilon_\eta, \sigma_\nu)$. Table A2 reports the estimation results. Figure A5 depicts estimated consumer confidence. As shown in the figure, these parametric conditions are not restrictive in the sense that our estimated consumer confidences are very similar irrespective of whether we impose such restrictions or not.

Table A2: Parameter estimates, US 1976:II–2019:III

Parameter	Description	Value	s.e.
ρ_x	Persistence permanent productivity	0.9612	0.0021
ρ_z	Persistence transitory productivity	0.9611	0.0027
σ_ϵ	Std dev. permanent shock	0.0002	0.0000
σ_η	Std dev. transitory shock	0.0058	0.0003
σ_ν	Std dev. noise shock	0.0122	0.0037

Notes: The parameter σ_u defined by the standard deviation of Δa_t . Given the random walk Assumption (2) for a_t , σ_ϵ and σ_η are determined by ρ and σ_u . As they are indirectly recovered, no standard errors are given.

Figure A5: Estimated model-based consumer confidence index: 1976:II–2019:III

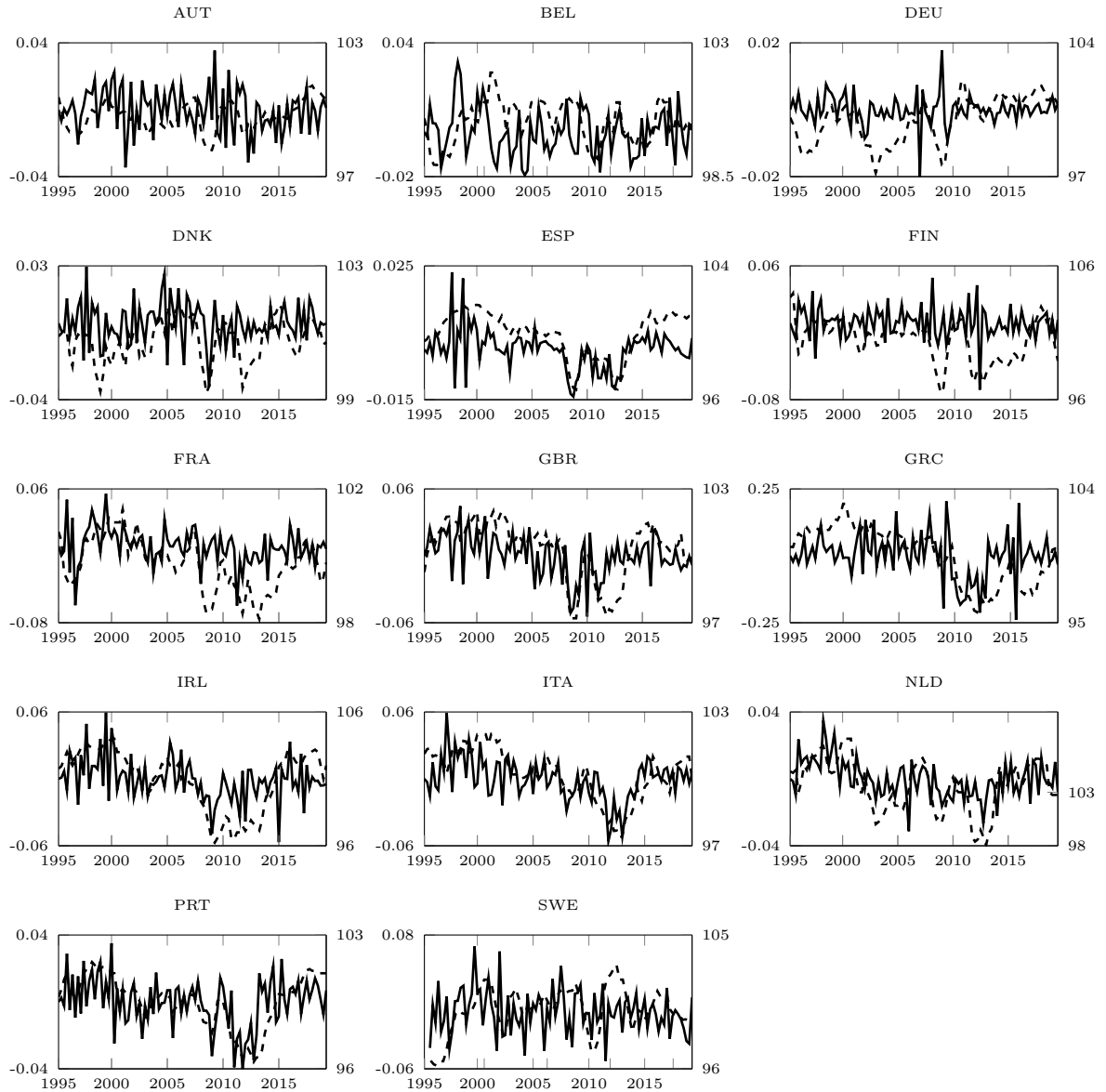


Notes: Shaded areas indicate U.S. recessions. The dashed line denotes the MB-CCI estimated with parameters in Table 1 whereas the solid line denotes the MB-CCI estimated with parameters in Table A2. *corr* denotes the correlation coefficient between them.

G Extra figures

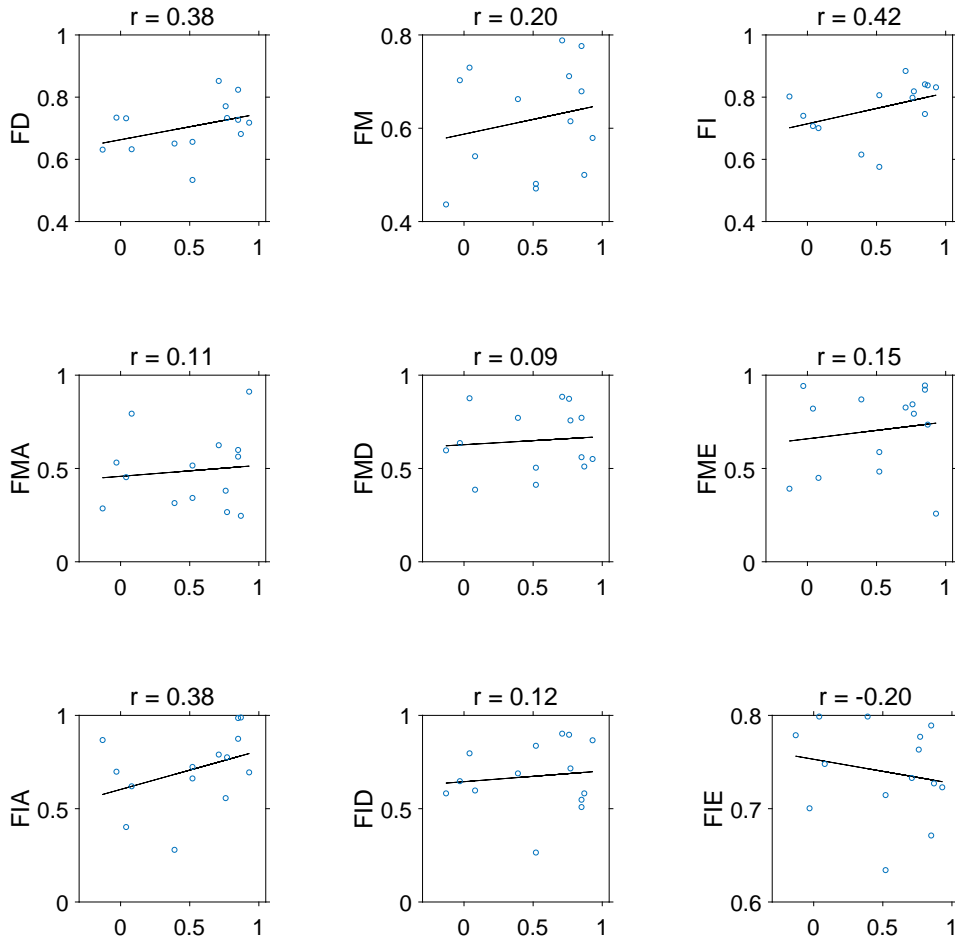
Figure A6 plots our consumer confidence estimated for the sample period (solid lines) along with Consumer Confidence Index from OECD (dashed lines). We also show the relationship between observed heterogeneity across countries and IMF financial development index (Figure A7) and various economic, social, and institutional factors (Figure A8).

Figure A6: Consumer confidence and OECD Confidence Index



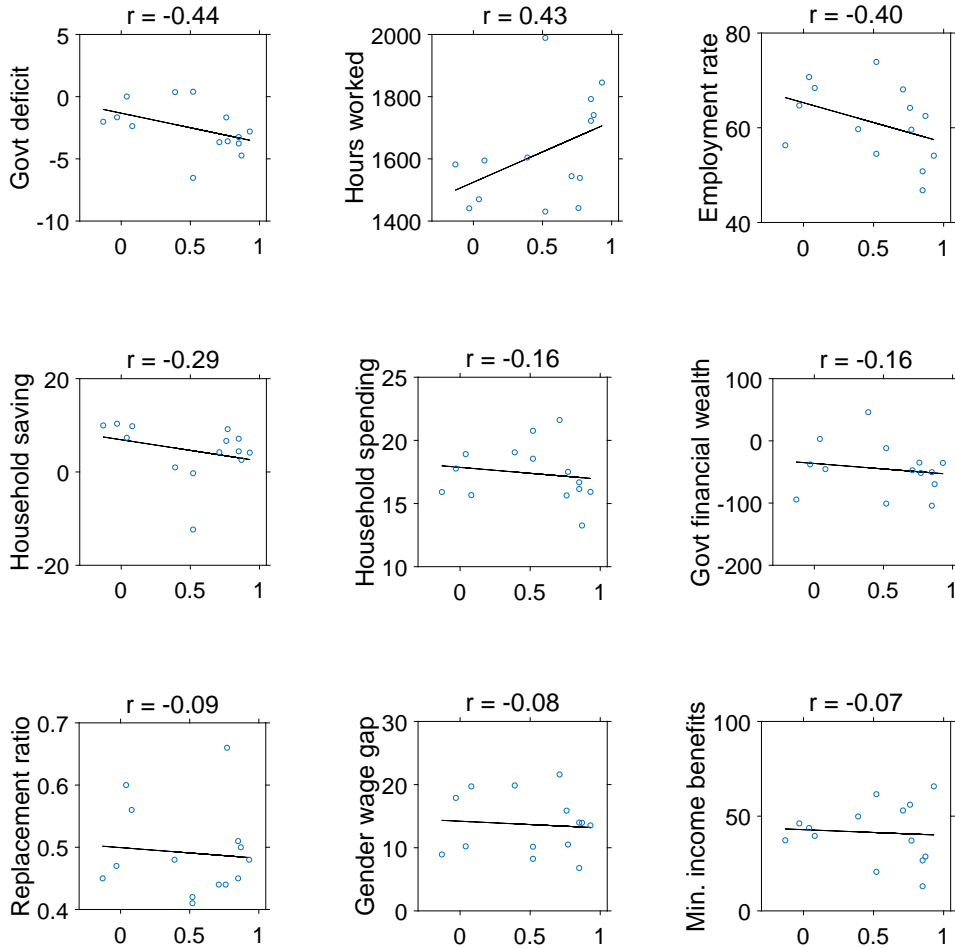
Notes: The dashed lines denote the (quarterly) Consumer Confidence Index (CCI) available from the OECD. Since it is published in monthly frequency, we change it to quarterly frequency by computing the quarterly arithmetic average at every quarter. The solid lines denote the MB-CCI. OECD consumer confidence corresponds to the right y-axis and the MB-CCI to the left y-axis. For Sweden, the CCI is available only from 1995:IV (SWE).

Figure A7: Correlation of confidence indices and IMF financial development indices



Notes: The panels show the relationship between IMF financial development indices and the correlation of two confidence indices. r reports the Pearson correlation coefficient. FD denotes the Financial Development index; FM denotes the Financial Markets index; FI denotes the Financial Institutions index; FMA denotes the Financial Markets Access index; FMD denotes the Financial Markets Depth index; FME denotes the Financial Markets Efficiency index; FIA denotes the Financial Institutions Access index; FID denotes the Financial Institutions Depth index; FIE denotes the Financial Institutions Efficiency index. For detailed description of the variables, see Appendix B.1.

Figure A8: Correlation of confidence indices and economics, social, and institutional factors



Notes: The panels show the relationship between economics, social, and institutional factors and the correlation of two confidence indices. r reports the Pearson correlation coefficient. *Govt deficit* denotes general government deficit; *Hours worked* denotes average annual hours worked; *Govt financial wealth* denotes general government financial wealth; *Replacement ratio* denotes the aggregate replacement ratio; *Min. income benefits* denote the adequacy of minimum income benefits. For detailed description of the variables, see Appendix B.2.